
Product Name: 14-3-3 epsilon (1W4) Rabbit Monoclonal Antibody**Catalog #: AMRe06274**

For research use only.

Summary

Description	Recombinant rabbit monoclonal antibody
Host	Rabbit
Application	WB,ICC/IF,FC
Reactivity	Human,Mouse,Rat
Conjugation	Unconjugated
Modification	Unmodified
Isotype	IgG
Clonality	Monoclonal
Form	Liquid
Concentration	0.5mg/ml. The concentration of this product may be batch-dependent.
Storage	Aliquot and store at -20°C (valid for 12 months). Avoid freeze/thaw cycles.
Shipping	Ice bags
Buffer	Rabbit IgG in phosphate buffered saline , pH 7.4, 150mM NaCl, 0.02% New type preservative N and 50% glycerol. Store at +4°C short term. Store at -20°C long term. Avoid freeze / thaw cycle.
Purification	Affinity purification

Application

Dilution Ratio	WB 1:1000-1:5000,ICC/IF 1:100-1:200,FC 1:100-1:1000
Molecular Weight	29kDa

Antigen Information

Gene Name	YWHAE
Alternative Names	14-3-3E; 143E; KCIP-1; MDCR; Protein kinase C inhibitor protein-1; YWHAE;
Gene ID	7531.0
SwissProt ID	P62258
Immunogen	A synthetic peptide of human YWHAE

Background

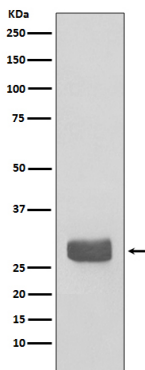
Adapter protein implicated in the regulation of a large spectrum of both general and specialized signaling pathway. Binds to a

large number of partners, usually by recognition of a phosphoserine or phosphothreonine motif. Binding generally results in the modulation of the activity of the binding partner. Adapter protein implicated in the regulation of a large spectrum of both general and specialized signaling pathways. Binds to a large number of partners, usually by recognition of a phosphoserine or phosphothreonine motif. Binding generally results in the modulation of the activity of the binding partner (By similarity). Positively regulates phosphorylated protein HSF1 nuclear export to the cytoplasm (PubMed:12917326).

Research Area

Neuroscience

Image Data



Western blot analysis of 14-3-3 epsilon expression in 293T cell lysate.