

**Product Name: Phospho-Rac1/Cdc42 (Ser71) (16U12) Rabbit Monoclonal Antibody**  
**Catalog #: AMRe05988**

For research use only.

## Summary

<b>Description</b>	Recombinant rabbit monoclonal antibody
<b>Host</b>	Rabbit
<b>Application</b>	WB
<b>Reactivity</b>	Human
<b>Conjugation</b>	Unconjugated
<b>Modification</b>	Phosphorylated
<b>Isotype</b>	IgG
<b>Clonality</b>	Monoclonal
<b>Form</b>	Liquid
<b>Concentration</b>	0.5mg/ml. The concentration of this product may be batch-dependent.
<b>Storage</b>	Aliquot and store at -20°C (valid for 12 months). Avoid freeze/thaw cycles.
<b>Shipping</b>	Ice bags
<b>Buffer</b>	Rabbit IgG in phosphate buffered saline , pH 7.4, 150mM NaCl, 0.02% New type preservative N and 50% glycerol. Store at +4°C short term. Store at -20°C long term. Avoid freeze / thaw cycle.
<b>Purification</b>	Affinity purification

## Application

<b>Dilution Ratio</b>	WB 1:500-1:2000
<b>Molecular Weight</b>	24kDa

## Antigen Information

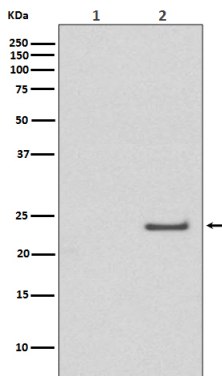
<b>Gene Name</b>	
<b>Alternative Names</b>	CDC42; CDC42Hs; G25K; TKS; MIG5; Ras like protein TC25;
<b>Gene ID</b>	
<b>SwissProt ID</b>	P60953/P63000
<b>Immunogen</b>	A synthetic phosphopeptide corresponding to residues surrounding Ser71 of human RAC1/Cdc42

## Background

Rac and Cdc42 are members of the Rho-GTPase family. In mammals, Rac exists as three isoforms, Rac1, Rac2 and Rac3, which are highly similar in sequence. Rac1 and Cdc42, the most widely studied of this group, are ubiquitously expressed. Rac2 is expressed in cells of hematopoietic origin, and Rac3, while highly expressed in brain, is also found in many other tissues. Rac and Cdc42 play key signaling roles in cytoskeletal reorganization, membrane trafficking, transcriptional regulation, cell growth and development.

## Research Area

## Image Data



Western blot analysis of Phospho-Rac1/Cdc42 (Ser71) expression in (1) A431 cell lysate treated with LP; (2) A431 cell lysate.