

---

**Product Name: Phospho-Phospholamban (S16) (3B11) Rabbit Monoclonal Antibody**  
**Catalog #: AMRe05966**

For research use only.

## Summary

<b>Description</b>	Recombinant rabbit monoclonal antibody
<b>Host</b>	Rabbit
<b>Application</b>	WB
<b>Reactivity</b>	Human, Mouse
<b>Conjugation</b>	Unconjugated
<b>Modification</b>	Phosphorylated
<b>Isotype</b>	IgG
<b>Clonality</b>	Monoclonal
<b>Form</b>	Liquid
<b>Concentration</b>	0.5mg/ml. The concentration of this product may be batch-dependent.
<b>Storage</b>	Aliquot and store at -20°C (valid for 12 months). Avoid freeze/thaw cycles.
<b>Shipping</b>	Ice bags
<b>Buffer</b>	Supplied in 50mM Tris-Glycine(pH 7.4), 0.15M NaCl, 40%Glycerol, 0.01% New type preservative N and 0.05% protective protein.
<b>Purification</b>	Affinity purification

## Application

<b>Dilution Ratio</b>	WB 1:1000-1:2000
<b>Molecular Weight</b>	6kDa

## Antigen Information

<b>Gene Name</b>	PLN
<b>Alternative Names</b>	Cardiac phospholamban; CMD1P; CMH18; PLB; Pln;
<b>Gene ID</b>	5350.0
<b>SwissProt ID</b>	P26678
<b>Immunogen</b>	Recombinant protein of human Phospholamban

## Background

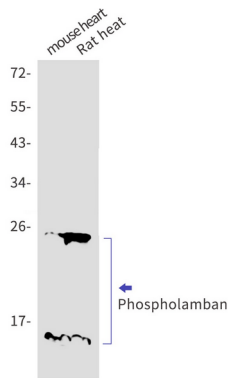
Reversibly inhibits the activity of ATP2A2 in cardiac sarcoplasmic reticulum by decreasing the apparent affinity of the ATPase for Ca(2+). Modulates the contractility of the heart muscle in response to physiological stimuli via its effects on ATP2A2.

Reversibly inhibits the activity of ATP2A2 in cardiac sarcoplasmic reticulum by decreasing the apparent affinity of the ATPase for Ca(2+) (PubMed:28890335). Modulates the contractility of the heart muscle in response to physiological stimuli via its effects on ATP2A2. Modulates calcium re-uptake during muscle relaxation and plays an important role in calcium homeostasis in the heart muscle. The degree of ATP2A2 inhibition depends on the oligomeric state of PLN. ATP2A2 inhibition is alleviated by PLN phosphorylation.

## Research Area

Signal Transduction

## Image Data



Western blot detection of Phospholamban in mouse heart , Rat heart cell lysates using Phospholamban antibody(1:1000 diluted).