

Product Name: Phospho-alpha Synuclein (S129) (15T7)
Rabbit Monoclonal Antibody
Catalog #: AMRe05849



Summary

Production Name	Phospho-alpha Synuclein (S129) (15T7) Rabbit Monoclonal Antibody
Description	Rabbit Monoclonal Antibody
Host	Rabbit
Application	WB,IHC-P
Reactivity	Human,Mouse,Rat

Performance

Conjugation	Unconjugated
Modification	Phosphorylated
Isotype	IgG
Clonality	Monoclonal
Form	Liquid
Storage	Store at 4°C short term. Aliquot and store at -20°C long term. Avoid freeze/thaw cycles. Rabbit IgG in phosphate buffered saline , pH 7.4, 150mM NaCl, 0.02% New type
Buffer	preservative N and 50% glycerol. Store at +4°C short term. Store at -20°C long term. Avoid freeze / thaw cycle.
Purification	Affinity purification

Immunogen

Gene Name	SNCA
Alternative Names	NACP; Non-A beta component of AD amyloid; Non-A4 component of amyloid precursor; SYN; SYUA; alpha-synuclein; PARK1; PARK4; PD1; SNCA;
Gene ID	6622.0
SwissProt ID	P37840.

Application

Dilution Ratio	WB 1:1000-1:5000, IHC-P/IF-P 1:200-1:500
Molecular Weight	14kDa

**Product Name: Phospho-alpha Synuclein (S129) (15T7)
Rabbit Monoclonal Antibody
Catalog #: AMRe05849**

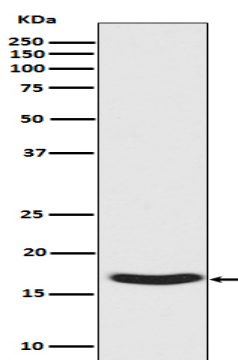


Background

Alpha-synuclein is a member of the synuclein family, which also includes beta- and gamma-synuclein. Synucleins are abundantly expressed in the brain and alpha- and beta-synuclein inhibit phospholipase D2 selectively. Neuronal protein that plays several roles in synaptic activity such as regulation of synaptic vesicle trafficking and subsequent neurotransmitter release. Participates as a monomer in synaptic vesicle exocytosis by enhancing vesicle priming, fusion and dilation of exocytotic fusion pores (PubMed:[28288128](http://www.uniprot.org/citations/28288128)), PubMed:[30404828](http://www.uniprot.org/citations/30404828)). Mechanistically, acts by increasing local Ca^{2+} release from microdomains which is essential for the enhancement of ATP-induced exocytosis (PubMed:[30404828](http://www.uniprot.org/citations/30404828)). Acts also as a molecular chaperone in its multimeric membrane-bound state, assisting in the folding of synaptic fusion components called SNAREs (Soluble NSF Attachment Protein REceptors) at presynaptic plasma membrane in conjunction with cysteine string protein-alpha/DNAJC5 (PubMed:[20798282](http://www.uniprot.org/citations/20798282)). This chaperone activity is important to sustain normal SNARE-complex assembly during aging (PubMed:[20798282](http://www.uniprot.org/citations/20798282)). Plays also a role in the regulation of the dopamine neurotransmission by associating with the dopamine transporter (DAT1) and thereby modulating its activity (PubMed:[26442590](http://www.uniprot.org/citations/26442590)).

Research Area

Image Data



Western blot analysis of Synuclein phosphorylation expression in Human fetal brain lysate.

Note



**Product Name: Phospho-alpha Synuclein (S129) (15T7)
Rabbit Monoclonal Antibody
Catalog #: AMRe05849**

For research use only.