
Product Name: 4E BP1 Rabbit Monoclonal Antibody**Catalog #: AMRe04141**

For research use only.

Summary

Description	Recombinant rabbit monoclonal antibody
Host	Rabbit
Application	WB,IHC,IP
Reactivity	Human,Mouse,Rat,Hamster
Conjugation	Unconjugated
Modification	Unmodified
Isotype	IgG
Clonality	Monoclonal
Form	Liquid
Concentration	0.51mg/ml. The concentration of this product may be batch-dependent.
Storage	Aliquot and store at -20°C (valid for 12 months). Avoid freeze/thaw cycles.
Shipping	Ice bags
Buffer	50mM Tris-Glycine(pH 7.4), 0.15M NaCl, 40% Glycerol, 0.01% Sodium azide and 0.05% protective protein
Purification	Affinity Purification

Application

Dilution Ratio	WB 1:500-1:1000,IHC 1:50-1:100,IP 1:20-1:50
Molecular Weight	Calculated MW: 13 kDa; Observed MW: 15-20 kDa

Antigen Information

Gene Name	EIF4EBP1
Alternative Names	EIF4EBP1; Eukaryotic translation initiation factor 4E-binding protein 1; 4E-BP1; eIF4E-binding protein 1; Phosphorylated heat- and acid-stable protein regulated by insulin 1; PHAS-I
Gene ID	1978
SwissProt ID	Q13541
Immunogen	A synthetic peptide corresponding to target protein

Background

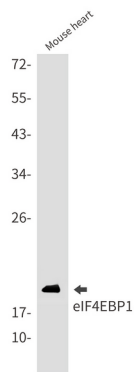
Translation repressor protein 4E-BP1 (also known as PHAS-1) inhibits cap-dependent translation by binding to the translation

initiation factor eIF4E. Hyperphosphorylation of 4E-BP1 disrupts this interaction and results in activation of cap-dependent translation. Both the PI3 kinase/Akt pathway and FRAP/mTOR kinase regulate 4E-BP1 activity.

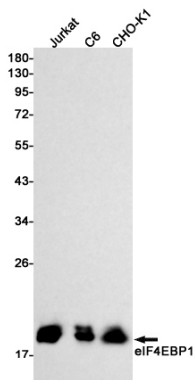
Research Area

Epigenetics and Nuclear Signaling

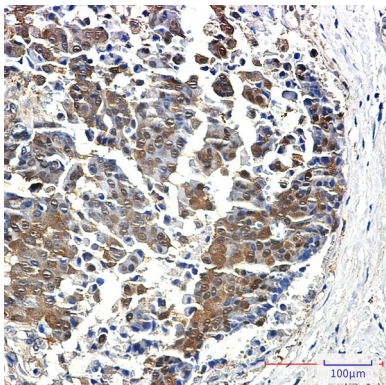
Image Data



Western blot analysis of eIF4EBP1 in mouse heart lysates using 4E BP1 antibody.



Western blot analysis of eIF4EBP1 in Jurkat, C6, CHO-K1 lysates using eIF4EBP1 antibody.



Immunohistochemistry analysis of paraffin-embedded Human breast cancer using eIF4EBP1 antibody. High-pressure and temperature Sodium Citrate pH 6.0 was used for antigen retrieval.