
Product Name: Phospho-PKC alpha (Thr638) Rabbit Monoclonal Antibody**Catalog #: AMRe04138**

For research use only.

Summary

Description	Recombinant rabbit monoclonal antibody
Host	Rabbit
Application	WB,IHC,IP
Reactivity	Human,Mouse,Rat
Conjugation	Unconjugated
Modification	Phosphorylated
Isotype	IgG
Clonality	Monoclonal
Form	Liquid
Concentration	0.5mg/ml. The concentration of this product may be batch-dependent.
Storage	Aliquot and store at -20°C (valid for 12 months). Avoid freeze/thaw cycles.
Shipping	Ice bags
Buffer	50mM Tris-Glycine(pH 7.4), 0.15M NaCl, 40% Glycerol, 0.01% Sodium azide and 0.05% protective protein
Purification	Affinity Purification

Application

Dilution Ratio	WB 1:500-1:1000,IHC 1:50-1:100,IP 1:20-1:50
Molecular Weight	Calculated MW: 77 kDa; Observed MW: 80 kDa

Antigen Information

Gene Name	PRKCA
Alternative Names	PRKCA; PKCA; PRKACA; Protein kinase C alpha type; PKC-A; PKC-alpha
Gene ID	5578
SwissProt ID	P17252
Immunogen	A synthetic Phosphorylated peptide corresponding to residues target protein

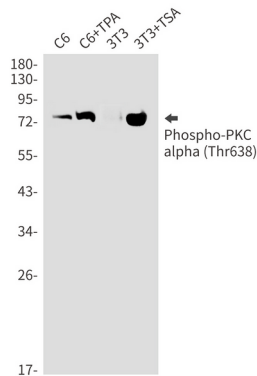
Background

PKC alpha is an AGC kinase of the PKC family. A classical PKC downstream of many mitogenic and receptors. Classical PKCs are calcium-dependent enzymes that are activated by phosphatidylserine, diacylglycerol and phorbol esters.

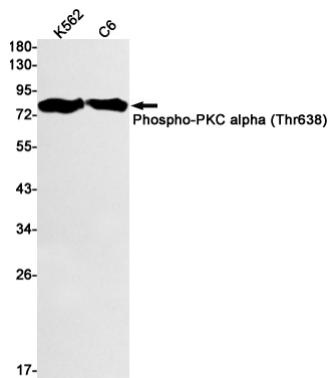
Research Area

Signal Transduction

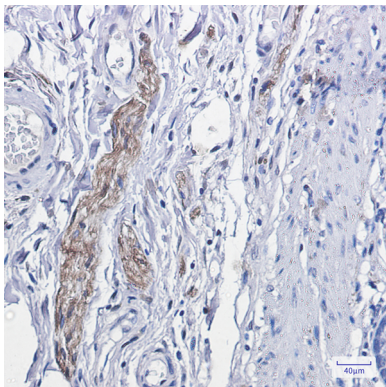
Image Data



Western blot analysis of Phospho-PKC alpha (Thr638) in C6, C6+TPA, 3T3, 3T3+TSA lysates using Phospho-PKC alpha (Thr638) antibody.



Western blot analysis of Phospho-PKC alpha (Thr638) in K562, C6 lysates using Phospho-PKC alpha (Thr638) antibody.



Immunohistochemistry analysis of paraffin-embedded Human colon cancer using Phospho-PKC alpha (Thr638) antibody. High-pressure and temperature Sodium Citrate pH 6.0 was used for antigen retrieval.