

Product Name: EGFR Rabbit Monoclonal Antibody**Catalog #: AMRe04134**

For research use only.

Summary

Description	Recombinant rabbit monoclonal antibody
Host	Rabbit
Application	WB,IHC,ICC/IF,IP
Reactivity	Human,Mouse
Conjugation	Unconjugated
Modification	Unmodified
Isotype	IgG
Clonality	Monoclonal
Form	Liquid
Concentration	0.51mg/ml. The concentration of this product may be batch-dependent.
Storage	Aliquot and store at -20°C (valid for 12 months). Avoid freeze/thaw cycles.
Shipping	Ice bags
Buffer	50mM Tris-Glycine(pH 7.4), 0.15M NaCl, 40% Glycerol, 0.01% Sodium azide and 0.05% protective protein
Purification	Affinity Purification

Application

Dilution Ratio	WB 1:500-1:1000,IHC 1:50-1:100,ICC/IF 1:50-1:200,IP 1:20-1:50
Molecular Weight	Calculated MW: 134 kDa; Observed MW: 175 kDa

Antigen Information

Gene Name	EGFR
Alternative Names	EGFR; ERBB; ERBB1; HER1; Epidermal growth factor receptor; Proto-oncogene c-ErbB-1; Receptor tyrosine-protein kinase erbB-1
Gene ID	1956
SwissProt ID	P00533
Immunogen	A synthetic peptide corresponding to target protein

Background

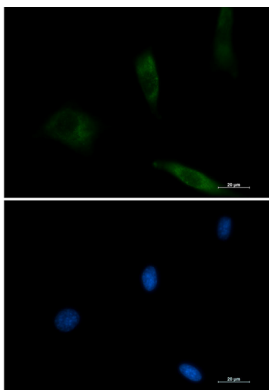
EGFR is a receptor tyrosine kinase. Receptor for epidermal growth factor (EGF) and related growth factors including TGF- α ,

amphiregulin, betacellulin, heparin-binding EGF-like growth factor, GP30 and vaccinia virus growth factor. Is involved in the control of cell growth and differentiation. . A single-pass transmembrane tyrosine kinase. Ligand binding to this receptor results in receptor dimerization, autophosphorylation (in trans), activation of various downstream signaling molecules and lysosomal degradation.

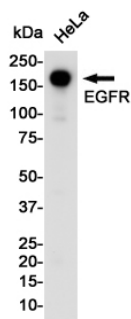
Research Area

Signal Transduction

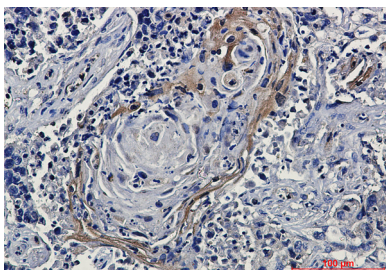
Image Data



Immunocytochemistry analysis of EGFR (green) in 3T3 using EGFR antibody, and DAPI (blue).



Western blot analysis of EGFR in HeLa lysates using EGFR antibody.



Immunohistochemistry analysis of paraffin-embedded Human lung cancer tissue using EGFR antibody. High-pressure and temperature Sodium Citrate pH 6.0 was used for antigen retrieval.