

---

**Product Name: Tuberin Rabbit Monoclonal Antibody****Catalog #: AMRe04133**

For research use only.

**Summary**

<b>Description</b>	Recombinant rabbit monoclonal antibody
<b>Host</b>	Rabbit
<b>Application</b>	WB,IP
<b>Reactivity</b>	Human
<b>Conjugation</b>	Unconjugated
<b>Modification</b>	Unmodified
<b>Isotype</b>	IgG
<b>Clonality</b>	Monoclonal
<b>Form</b>	Liquid
<b>Concentration</b>	0.5mg/ml. The concentration of this product may be batch-dependent.
<b>Storage</b>	Aliquot and store at -20°C (valid for 12 months). Avoid freeze/thaw cycles.
<b>Shipping</b>	Ice bags
<b>Buffer</b>	50mM Tris-Glycine(pH 7.4), 0.15M NaCl, 40% Glycerol, 0.01% Sodium azide and 0.05% protective protein
<b>Purification</b>	Affinity Purification

**Application**

<b>Dilution Ratio</b>	WB 1:500-1:1000,IP 1:20-1:50
<b>Molecular Weight</b>	Calculated MW: 201 kDa; Observed MW: 201 kDa

**Antigen Information**

<b>Gene Name</b>	TSC2
<b>Alternative Names</b>	TSC2; Tuberous sclerosis 2 homolog protein; Tuberous sclerosis 2 protein; Tuberin; TSC4
<b>Gene ID</b>	7249
<b>SwissProt ID</b>	P49815
<b>Immunogen</b>	A synthetic peptide corresponding to target protein

**Background**

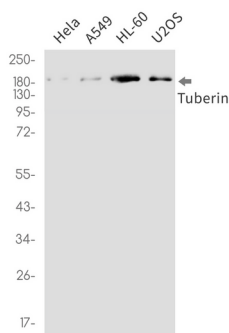
Tuberin is a product of the TSC2 tumor suppressor gene and an important regulator of cell proliferation and tumor development. Mutations in either TSC2 or the related TSC1 (hamartin) gene cause tuberous sclerosis complex (TSC), an

autosomal dominant disorder characterized by development of multiple, widespread non-malignant tumors. Tuberin is directly phosphorylated at Thr1462 by Akt/PKB. Phosphorylation at Thr1462 and Tyr1571 regulates tuberin-hamartin complexes and tuberin activity.

## Research Area

Cell Biology

## Image Data



Western blot analysis of Tuberin in HeLa, A549, HL-60, U2OS lysates using Tuberin antibody.