
Product Name: CDC123 Rabbit Monoclonal antibody**Catalog #: AMRe04120**

For research use only.

Summary

Description	Recombinant rabbit monoclonal antibody
Host	Rabbit
Application	WB,IP
Reactivity	Human
Conjugation	Unconjugated
Modification	Unmodified
Isotype	IgG
Clonality	Monoclonal Antibody
Form	Liquid
Concentration	1.12mg/ml. The concentration of this product may be batch-dependent.
Storage	Aliquot and store at -20°C (valid for 12 months). Avoid freeze/thaw cycles.
Shipping	Ice bags
Buffer	50mM Tris-Glycine(pH 7.4), 0.15M NaCl, 40% Glycerol, 0.01% Sodium azide and 0.05% protective protein
Purification	Affinity Purified

Application

Dilution Ratio	WB 1:500-1:1000,IP 1:20-1:50
Molecular Weight	Calculated MW: 39 kDa; Observed MW: 39 kDa

Antigen Information

Gene Name	CDC123
Alternative Names	C10orf7; CDC123; Cell division cycle 123; D123; HT 1080; PZ32
Gene ID	8872
SwissProt ID	O75794
Immunogen	A synthetic peptide of human CDC123

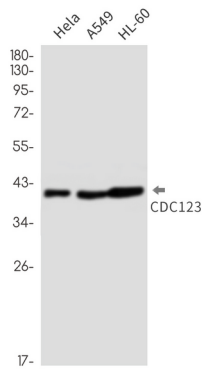
Background

Required for S phase entry of the cell cycle.

Research Area

Cell Biology

Image Data



Western blot analysis of CDC123 in HeLa, A549, HL-60 lysates using CDC123 antibody.