

**Product Name: Phospho-HSF1 (Ser303/Ser307) Rabbit Monoclonal Antibody****Catalog #: AMRe04113**

For research use only.

**Summary**

<b>Description</b>	Recombinant rabbit monoclonal antibody
<b>Host</b>	Rabbit
<b>Application</b>	WB,IHC
<b>Reactivity</b>	Human
<b>Conjugation</b>	Unconjugated
<b>Modification</b>	Phosphorylated
<b>Isotype</b>	IgG
<b>Clonality</b>	Monoclonal
<b>Form</b>	Liquid
<b>Concentration</b>	0.5mg/ml. The concentration of this product may be batch-dependent.
<b>Storage</b>	Aliquot and store at -20°C (valid for 12 months). Avoid freeze/thaw cycles.
<b>Shipping</b>	Ice bags
<b>Buffer</b>	50mM Tris-Glycine(pH 7.4), 0.15M NaCl, 40% Glycerol, 0.01% Sodium azide and 0.05% protective protein
<b>Purification</b>	Affinity Purification

**Application**

<b>Dilution Ratio</b>	WB 1:500-1:1000,IHC 1:50-1:100
<b>Molecular Weight</b>	Calculated MW: 57 kDa; Observed MW: 82 kDa

**Antigen Information**

<b>Gene Name</b>	HSF1
<b>Alternative Names</b>	HSF1; HSTF1; Heat shock factor protein 1; HSF 1; Heat shock transcription factor 1; HSTF 1
<b>Gene ID</b>	3297
<b>SwissProt ID</b>	Q00613
<b>Immunogen</b>	A synthetic Phosphorylated peptide corresponding to residues target protein

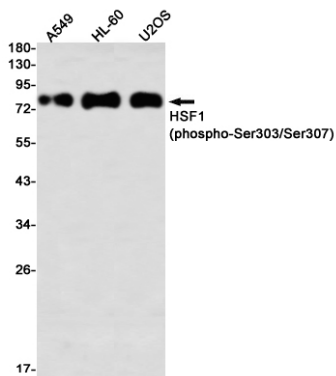
**Background**

DNA-binding protein that specifically binds heat shock promoter elements (HSE) and activates transcription. In higher eukaryotes, HSF is unable to bind to the HSE unless the cells are heat shocked.

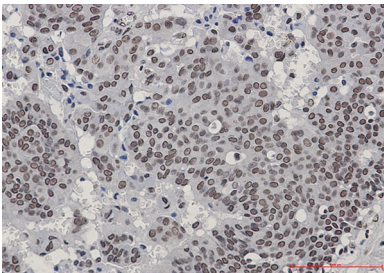
## Research Area

Tags & Cell Markers

## Image Data



Western blot analysis of HSF1 (Phospho-Ser303/Ser307) in A549, HL-60, U2OS lysates using Phospho-HSF1 (Ser303/Ser307) antibody.



Immunohistochemistry analysis of paraffin-embedded Human breast cancer using HSF1 (Phospho-Ser303/Ser307) antibody. High-pressure and temperature Sodium Citrate pH 6.0 was used for antigen retrieval.