

**Product Name: Phospho-Cyclin B1 (Ser126) Rabbit Monoclonal Antibody****Catalog #: AMRe04112**

For research use only.

**Summary**

<b>Description</b>	Recombinant rabbit monoclonal antibody
<b>Host</b>	Rabbit
<b>Application</b>	WB,IP
<b>Reactivity</b>	Human
<b>Conjugation</b>	Unconjugated
<b>Modification</b>	Phosphorylated
<b>Isotype</b>	IgG
<b>Clonality</b>	Monoclonal
<b>Form</b>	Liquid
<b>Concentration</b>	0.5mg/ml. The concentration of this product may be batch-dependent.
<b>Storage</b>	Aliquot and store at -20°C (valid for 12 months). Avoid freeze/thaw cycles.
<b>Shipping</b>	Ice bags
<b>Buffer</b>	50mM Tris-Glycine(pH 7.4), 0.15M NaCl, 40% Glycerol, 0.01% Sodium azide and 0.05% protective protein
<b>Purification</b>	Affinity Purification

**Application**

<b>Dilution Ratio</b>	WB 1:500-1:1000,IP 1:20-1:50
<b>Molecular Weight</b>	Calculated MW: 48 kDa; Observed MW: 55 kDa

**Antigen Information**

<b>Gene Name</b>	CCNB1
<b>Alternative Names</b>	CCNB1; CCNB; G2/mitotic-specific cyclin-B1
<b>Gene ID</b>	891
<b>SwissProt ID</b>	P14635
<b>Immunogen</b>	A synthetic Phosphorylated peptide corresponding to residues target protein

**Background**

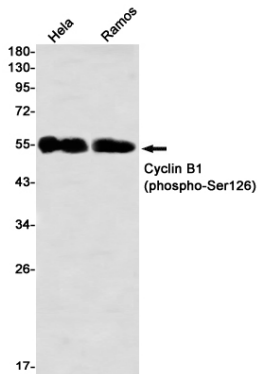
Essential for the control of the cell cycle at the G2/M (mitosis) transition. a member of the highly conserved cyclin family, whose members are characterized by a dramatic periodicity in protein abundance through the cell cycle. Cyclins function as regulators

of CDK kinases.

## Research Area

Cell Biology

## Image Data



Western blot analysis of Cyclin B1 (Phospho-Ser126) in HeLa, Ramos lysates using Phospho-Cyclin B1 (Ser126) antibody.