

**Product Name: Thyroid Transcription Factor 1 Rabbit Monoclonal Antibody****Catalog #: AMRe04110**

For research use only.

**Summary**

<b>Description</b>	Recombinant rabbit monoclonal antibody
<b>Host</b>	Rabbit
<b>Application</b>	WB,IHC,IP
<b>Reactivity</b>	Human,Mouse,Rat
<b>Conjugation</b>	Unconjugated
<b>Modification</b>	Unmodified
<b>Isotype</b>	IgG
<b>Clonality</b>	Monoclonal
<b>Form</b>	Liquid
<b>Concentration</b>	0.55mg/ml. The concentration of this product may be batch-dependent.
<b>Storage</b>	Aliquot and store at -20°C (valid for 12 months). Avoid freeze/thaw cycles.
<b>Shipping</b>	Ice bags
<b>Buffer</b>	50mM Tris-Glycine(pH 7.4), 0.15M NaCl, 40% Glycerol, 0.01% Sodium azide and 0.05% protective protein
<b>Purification</b>	Affinity Purification

**Application**

<b>Dilution Ratio</b>	WB 1:500-1:1000,IHC 1:50-1:100,IP 1:20-1:50
<b>Molecular Weight</b>	Calculated MW: 39 kDa; Observed MW: 39 kDa

**Antigen Information**

<b>Gene Name</b>	NKX2-1
<b>Alternative Names</b>	NKX2-1; NKX2A; TITF1; TTF1; Homeobox protein Nkx-2.1; Homeobox protein NK-2 homolog A; Thyroid nuclear factor 1; Thyroid transcription factor 1; TTF-1
<b>Gene ID</b>	7080
<b>SwissProt ID</b>	P43699
<b>Immunogen</b>	Recombinant protein of human TTF1

**Background**

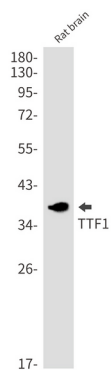
This gene encodes a protein initially identified as a thyroid-specific transcription factor. The encoded protein binds to the

thyroglobulin promoter and regulates the expression of thyroid-specific genes but has also been shown to regulate the expression of genes involved in morphogenesis. Mutations and deletions in this gene are associated with benign hereditary chorea, choreoathetosis, congenital hypothyroidism, and neonatal respiratory distress, and may be associated with thyroid cancer.

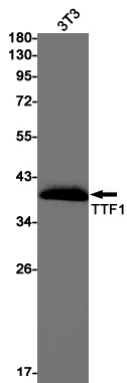
## Research Area

Epigenetics and Nuclear Signaling

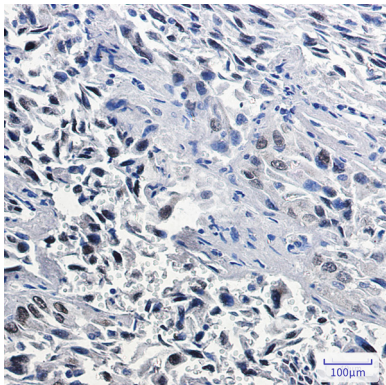
## Image Data



Western blot analysis of TTF1 in rat brain lysates using Thyroid Transcription Factor 1 antibody.



Western blot analysis of TTF1 in 3T3 lysates using TTF1 antibody.



Immunohistochemistry analysis of paraffin-embedded Human lung cancer using TTF1 antibody. High-pressure and temperature Sodium Citrate pH 6.0 was used for antigen retrieval.