
Product Name: Src Rabbit Monoclonal antibody**Catalog #: AMRe04108**

For research use only.

Summary

Description	Recombinant rabbit monoclonal antibody
Host	Rabbit
Application	WB,IHC
Reactivity	Human,Mouse,Rat
Conjugation	Unconjugated
Modification	Unmodified
Isotype	IgG
Clonality	Monoclonal Antibody
Form	Liquid
Concentration	0.8mg/ml. The concentration of this product may be batch-dependent.
Storage	Aliquot and store at -20°C (valid for 12 months). Avoid freeze/thaw cycles.
Shipping	Ice bags
Buffer	50mM Tris-Glycine(pH 7.4), 0.15M NaCl, 40% Glycerol, 0.01% Sodium azide and 0.05% protective protein
Purification	Affinity Purified

Application

Dilution Ratio	WB 1:500-1:1000,IHC 1:50-1:100
Molecular Weight	Calculated MW: 60 kDa; Observed MW: 60 kDa

Antigen Information

Gene Name	SRC
Alternative Names	SRC; SRC1; Proto-oncogene tyrosine-protein kinase Src; Proto-oncogene c-Src; pp60c-src; p60-Src
Gene ID	6714
SwissProt ID	P12931
Immunogen	A synthetic peptide corresponding to target protein

Background

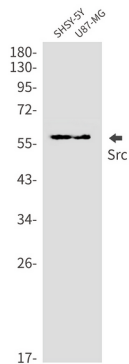
Src activity is regulated by tyrosine phosphorylation at two sites, but with opposing effects. While phosphorylation at Tyr416 in

the activation loop of the kinase domain upregulates enzyme activity, phosphorylation at Tyr527 in the carboxy-terminal tail by Csk renders the enzyme less active (2).

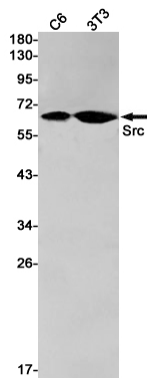
Research Area

Signal Transduction

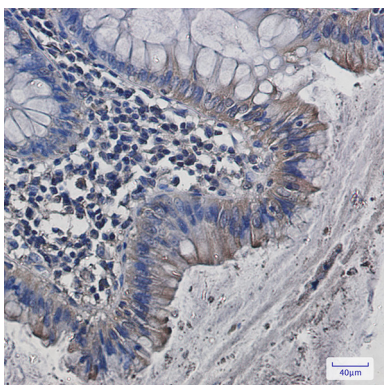
Image Data



Western blot analysis of Src in SH-SY5Y, U87-MG lysates using Src antibody.



Western blot analysis of Src in C6, 3T3 lysates using Src antibody.



Immunohistochemistry analysis of paraffin-embedded Human colon cancer using Src antibody. High-pressure and temperature Sodium Citrate pH 6.0 was used for antigen retrieval.