
Product Name: PKC delta Rabbit Monoclonal Antibody**Catalog #: AMRe04099**

For research use only.

Summary

Description	Recombinant rabbit monoclonal antibody
Host	Rabbit
Application	WB,IHC,ICC/IF
Reactivity	Human,Mouse,Rat
Conjugation	Unconjugated
Modification	Unmodified
Isotype	IgG
Clonality	Monoclonal
Form	Liquid
Concentration	0.54mg/ml. The concentration of this product may be batch-dependent.
Storage	Aliquot and store at -20°C (valid for 12 months). Avoid freeze/thaw cycles.
Shipping	Ice bags
Buffer	50mM Tris-Glycine(pH 7.4), 0.15M NaCl, 40% Glycerol, 0.01% Sodium azide and 0.05% protective protein
Purification	Affinity Purification

Application

Dilution Ratio	WB 1:500-1:1000,IHC 1:50-1:100,ICC/IF 1:50-1:200
Molecular Weight	Calculated MW: 78 kDa; Observed MW: 78 kDa

Antigen Information

Gene Name	Prkcd
Alternative Names	Pkcd; PKC[d]; AI385711; PKCdelta; D14Ert420e
Gene ID	18753.0
SwissProt ID	P28867
Immunogen	Recombinant protein of human PKC delta

Background

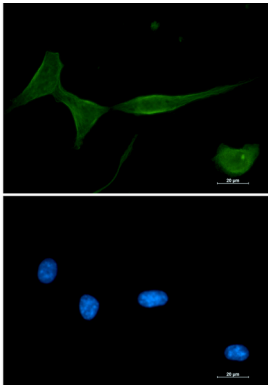
Calcium-independent, phospholipid- and diacylglycerol (DAG)-dependent serine/threonine-protein kinase that plays contrasting roles in cell death and cell survival by functioning as a pro-apoptotic protein during DNA damage-induced

apoptosis, but acting as an anti-apoptotic protein during cytokine receptor-initiated cell death, is involved in tumor suppression, is required for oxygen radical production by NADPH oxidase and acts as positive or negative regulator in platelet functional responses.

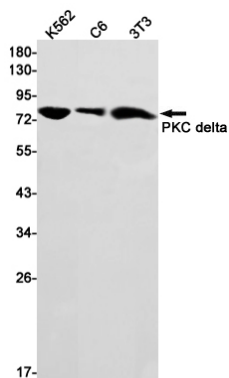
Research Area

Signal Transduction

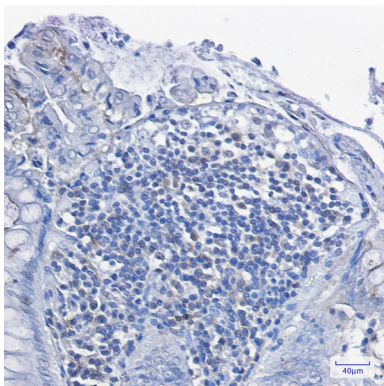
Image Data



Immunocytochemistry analysis of PKC delta (green) in 3T3 using PKC delta antibody, and DAPI (blue).



Western blot analysis of PKC delta in K562, C6, 3T3 lysates using PKC delta antibody.



Immunohistochemistry analysis of paraffin-embedded Human colon cancer tissue using PKC delta antibody. High-pressure and temperature Sodium Citrate pH 6.0 was used for antigen retrieval.