

Product Name: Phospho-PKC gamma (Thr514) Rabbit Monoclonal Antibody**Catalog #: AMRe04098**

For research use only.

Summary

Description	Recombinant rabbit monoclonal antibody
Host	Rabbit
Application	WB,IHC,IP
Reactivity	Human,Mouse,Rat
Conjugation	Unconjugated
Modification	Phosphorylated
Isotype	IgG
Clonality	Monoclonal
Form	Liquid
Concentration	0.5mg/ml. The concentration of this product may be batch-dependent.
Storage	Aliquot and store at -20°C (valid for 12 months). Avoid freeze/thaw cycles.
Shipping	Ice bags
Buffer	50mM Tris-Glycine(pH 7.4), 0.15M NaCl, 40% Glycerol, 0.01% Sodium azide and 0.05% protective protein
Purification	Affinity Purification

Application

Dilution Ratio	WB 1:500-1:1000,IHC 1:50-1:100,IP 1:20-1:50
Molecular Weight	Calculated MW: 78 kDa; Observed MW: 78-85 kDa

Antigen Information

Gene Name	PRKCG
Alternative Names	PRKCG; PKCG; Protein kinase C gamma type; PKC-gamma
Gene ID	5582
SwissProt ID	P05129
Immunogen	A synthetic Phosphorylated peptide corresponding to residues target protein

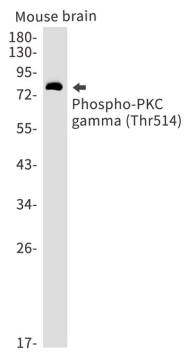
Background

This is a calcium-activated, phospholipid-dependent, serine- and threonine-specific enzyme.

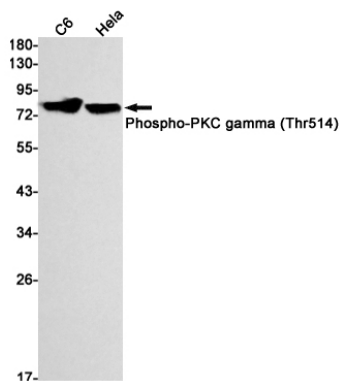
Research Area

Signal Transduction

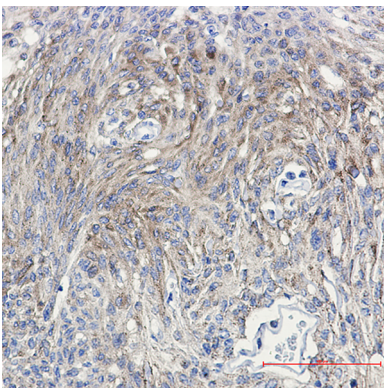
Image Data



Western blot analysis of Phospho-PKC gamma (Thr514) in mouse brain lysates using Phospho-PKC gamma (Thr514) antibody.



Western blot analysis of Phospho-PKC gamma (Thr514) in C6, Hela lysates using Phospho-PKC gamma (Thr514) antibody.



Immunohistochemistry analysis of paraffin-embedded Human Brain using PKC (Phospho-Thr514) antibody. High-pressure and temperature Sodium Citrate pH 6.0 was used for antigen retrieval.