

Product Name: p150 CAF1 Rabbit Monoclonal antibody**Catalog #: AMRe04094**

For research use only.

Summary

Description	Recombinant rabbit monoclonal antibody
Host	Rabbit
Application	WB,IHC,ICC/IF,IP
Reactivity	Human
Conjugation	Unconjugated
Modification	Unmodified
Isotype	IgG
Clonality	Monoclonal Antibody
Form	Liquid
Concentration	0.5mg/ml. The concentration of this product may be batch-dependent.
Storage	Aliquot and store at -20°C (valid for 12 months). Avoid freeze/thaw cycles.
Shipping	Ice bags
Buffer	50mM Tris-Glycine(pH 7.4), 0.15M NaCl, 40% Glycerol, 0.01% Sodium azide and 0.05% protective protein
Purification	Affinity Purified

Application

Dilution Ratio	WB 1:500-1:1000,IHC 1:50-1:100,ICC/IF 1:50-1:200,IP 1:20-1:50
Molecular Weight	Calculated MW: 107 kDa; Observed MW: 150 kDa

Antigen Information

Gene Name	CHAF1A
Alternative Names	CHAF1A; CAF; CAF1P150; Chromatin assembly factor 1 subunit A; CAF-1 subunit A; Chromatin assembly factor I p150 subunit; CAF-I 150 kDa subunit; CAF-I p150; hp150
Gene ID	10036
SwissProt ID	Q13111
Immunogen	A synthetic peptide of human p150 CAF1

Background

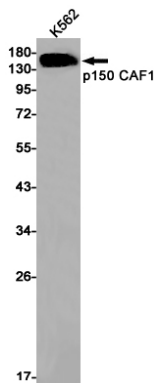
Core component of the CAF-1 complex, a complex thought to mediate chromatin assembly in DNA replication and DNA repair.

Assembles histone octamers onto replicating DNA in vitro. CAF-1 performs the first step of the nucleosome assembly process, bringing newly synthesized histones H3 and H4 to replicating DNA; histones H2A/H2B can bind to this chromatin precursor subsequent to DNA replication to complete the histone octamer.

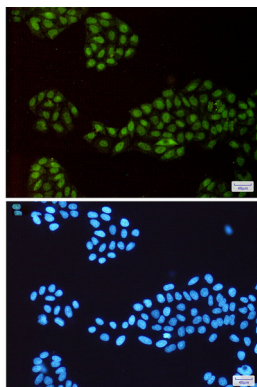
Research Area

Epigenetics and Nuclear Signaling

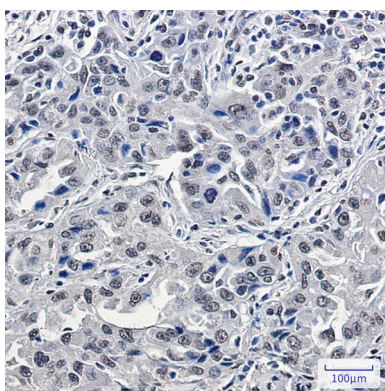
Image Data



Western blot analysis of p150 CAF1 in K562 lysates using p150 CAF1 antibody.



Immunocytochemistry analysis of p150 CAF1 (green) in HeLa using p150 CAF1 antibody, and DAPI (blue)



Immunohistochemistry analysis of paraffin-embedded Human lung cancer using p150 CAF1/CAF antibody. High-pressure and temperature Sodium Citrate pH 6.0 was used for antigen retrieval.