
Product Name: MBD2 Rabbit Monoclonal antibody**Catalog #: AMRe04089**

For research use only.

Summary

Description	Recombinant rabbit monoclonal antibody
Host	Rabbit
Application	WB,IHC,ICC/IF,IP
Reactivity	Human,Mouse,Rat
Conjugation	Unconjugated
Modification	Unmodified
Isotype	IgG
Clonality	Monoclonal Antibody
Form	Liquid
Concentration	0.13mg/ml. The concentration of this product may be batch-dependent.
Storage	Aliquot and store at -20°C (valid for 12 months). Avoid freeze/thaw cycles.
Shipping	Ice bags
Buffer	50mM Tris-Glycine(pH 7.4), 0.15M NaCl, 40% Glycerol, 0.01% Sodium azide and 0.05% protective protein
Purification	Affinity Purified

Application

Dilution Ratio	WB 1:500-1:1000,IHC 1:50-1:100,ICC/IF 1:50-1:200,IP 1:20-1:50
Molecular Weight	Calculated MW: 43 kDa; Observed MW: 29,43 kDa

Antigen Information

Gene Name	MBD2
Alternative Names	Demethylase; DMTase; Mbd2; MBD2a
Gene ID	8932
SwissProt ID	Q9UBB5
Immunogen	A synthetic peptide of human MBD2

Background

Binds CpG islands in promoters where the DNA is methylated at position 5 of cytosine within CpG dinucleotides. Binds hemimethylated DNA as well. Recruits histone deacetylases and DNA methyltransferases.

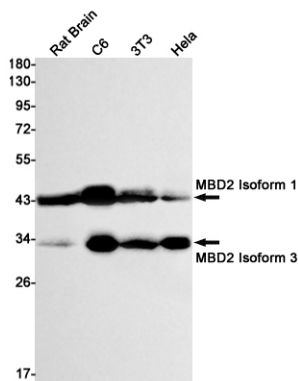
Research Area

Epigenetics and Nuclear Signaling

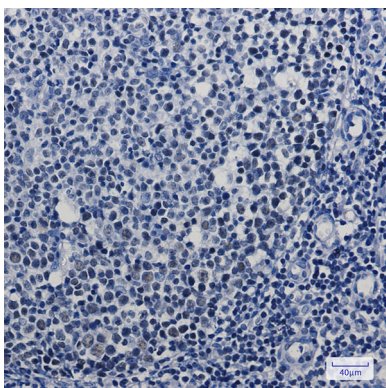
Image Data



Immunocytochemistry analysis of MBD2 (green) in HL-60 using MBD2 antibody, and DAPI (blue).



Western blot analysis of MBD2 in rat Brain, C6, 3T3, HeLa lysates using MBD2 antibody.



Immunohistochemistry analysis of paraffin-embedded Human tonsil using MBD2 antibody. High-pressure and temperature Sodium Citrate pH 6.0 was used for antigen retrieval.