

Product Name: Gelsolin Rabbit Monoclonal Antibody
Catalog #: AMRe04082



Summary

Production Name	Gelsolin Rabbit Monoclonal Antibody
Description	Rabbit Monoclonal antibody
Host	Rabbit
Application	WB,IHC-F,IHC-P,ICC/IF
Reactivity	Human,Mouse

Performance

Conjugation	Unconjugated
Modification	Unmodified
Isotype	IgG
Clonality	Monoclonal
Form	Liquid
Storage	Store at 4°C short term. Aliquot and store at -20°C long term. Avoid freeze/thaw cycles.
Buffer	50mM Tris-Glycine(pH 7.4), 0.15M NaCl, 40% Glycerol, 0.01% Sodium azide and 0.05% protective protein
Purification	Affinity Purification

Immunogen

Gene Name	GSN
Alternative Names	ADF; AGEL; Brevin; Gelsolin; Gsn
Gene ID	2934
SwissProt ID	P06396.

Application

Dilution Ratio	WB: 1:500-1:1000 IHC: 1:50-1:100 IF: 1:50-1:200
Molecular Weight	Calculated MW: 86 kDa; Observed MW: 86 kDa

Background

Calcium-regulated, actin-modulating protein that binds to the plus (or barbed) ends of actin monomers or filaments,

Product Name: Gelsolin Rabbit Monoclonal Antibody
Catalog #: AMRe04082

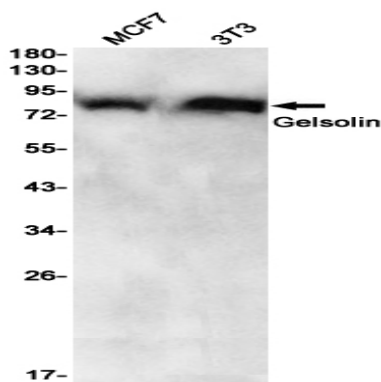


preventing monomer exchange (end-blocking or capping). It can promote the assembly of monomers into filaments (nucleation) as well as sever filaments already formed. Plays a role in ciliogenesis.

Research Area

Signal Transduction

Image Data



Western blot analysis of Gelsolin in MCF-7, 3T3 lysates using Gelsolin antibody.

Note

For research use only.