

Product Name: EGFR Rabbit Monoclonal Antibody
Catalog #: AMRe04076



Summary

Production Name	EGFR Rabbit Monoclonal Antibody
Description	Rabbit Monoclonal antibody
Host	Rabbit
Application	WB,IHC-P,IP
Reactivity	Human

Performance

Conjugation	Unconjugated
Modification	Unmodified
Isotype	IgG
Clonality	Monoclonal
Form	Liquid
Storage	Store at 4°C short term. Aliquot and store at -20°C long term. Avoid freeze/thaw cycles.
Buffer	50mM Tris-Glycine(pH 7.4), 0.15M NaCl, 40% Glycerol, 0.01% Sodium azide and 0.05% protective protein
Purification	Affinity Purification

Immunogen

Gene Name	EGFR
Alternative Names	EGFR; ERBB; ERBB1; HER1; Epidermal growth factor receptor; Proto-oncogene c-ErbB-1; Receptor tyrosine-protein kinase erbB-1
Gene ID	1956
SwissProt ID	P00533.

Application

Dilution Ratio	WB: 1:500-1:1000 IHC: 1:50-1:100 IP: 1:20
Molecular Weight	Calculated MW: 134 kDa; Observed MW: 175 kDa

Product Name: EGFR Rabbit Monoclonal Antibody
Catalog #: AMRe04076



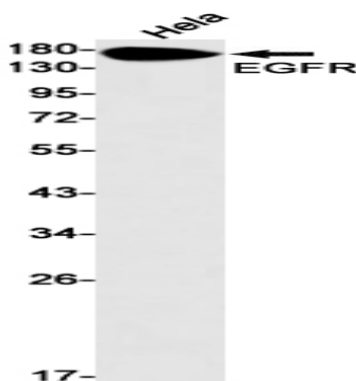
Background

EGFR is a receptor tyrosine kinase. Receptor for epidermal growth factor (EGF) and related growth factors including TGF- α , amphiregulin, betacellulin, heparin-binding EGF-like growth factor, GP30 and vaccinia virus growth factor. Is involved in the control of cell growth and differentiation. . A single-pass transmembrane tyrosine kinase. Ligand binding to this receptor results in receptor dimerization, autophosphorylation (in trans), activation of various downstream signaling molecules and lysosomal degradation.

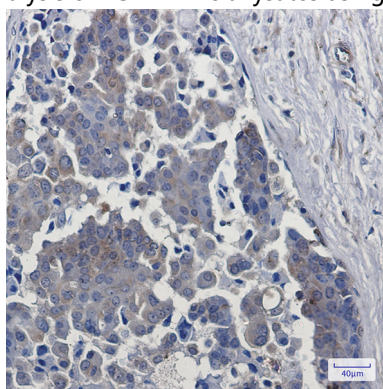
Research Area

Signal Transduction

Image Data



Western blot analysis of EGFR in HeLa lysates using EGFR antibody.



Immunohistochemistry analysis of paraffin-embedded Human breast cancer using EGFR antibody. High-pressure and temperature Sodium Citrate pH 6.0 was used for antigen retrieval.

Note

For research use only.