

Product Name: DCAMKL1 Rabbit Monoclonal Antibody**Catalog #: AMRe04073**

For research use only.

Summary

Description	Recombinant rabbit monoclonal antibody
Host	Rabbit
Application	WB,IHC,ICC/IF
Reactivity	Human,Mouse,Rat
Conjugation	Unconjugated
Modification	Unmodified
Isotype	IgG
Clonality	Monoclonal
Form	Liquid
Concentration	0.39mg/ml. The concentration of this product may be batch-dependent.
Storage	Aliquot and store at -20°C (valid for 12 months). Avoid freeze/thaw cycles.
Shipping	Ice bags
Buffer	50mM Tris-Glycine(pH 7.4), 0.15M NaCl, 40% Glycerol, 0.01% Sodium azide and 0.05% protective protein
Purification	Affinity Purification

Application

Dilution Ratio	WB 1:500-1:1000,IHC 1:50-1:100,ICC/IF 1:50-1:200
Molecular Weight	Calculated MW: 82 kDa; Observed MW: 47,82 kDa

Antigen Information

Gene Name	DCLK1
Alternative Names	doublecortin-like kinase 1; CL1; DCLK; CLICK1; DCDC3A; DCAMKL1
Gene ID	9201
SwissProt ID	O15075
Immunogen	A synthetic peptide of human DCAMKL1

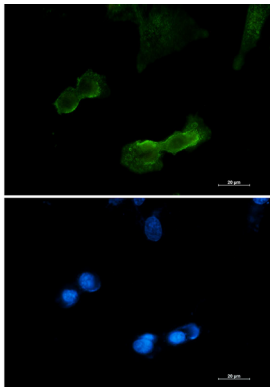
Background

Probable kinase that may be involved in a calcium-signaling pathway controlling neuronal migration in the developing brain. May also participate in functions of the mature nervous system.

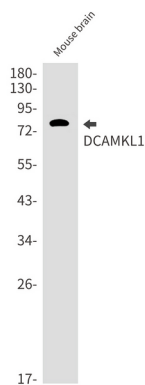
Research Area

Neuroscience

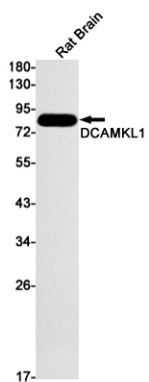
Image Data



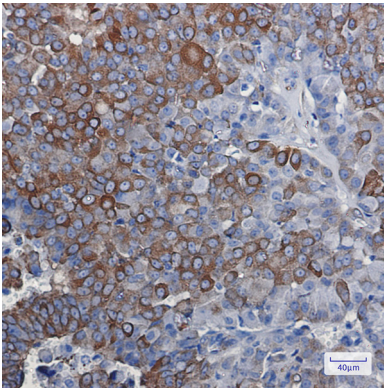
Immunocytochemistry analysis of DCAMKL1 (green) in U87-MG using DCAMKL1 antibody, and DAPI (blue).



Western blot analysis of DCAMKL1 in mouse brain lysates using DCAMKL1 antibody.



Western blot analysis of DCAMKL1 in rat Brain lysates using DCAMKL1 antibody



Immunohistochemistry analysis of paraffin-embedded Human breast cancer using DCAMKL1 antibody. High-pressure and temperature Sodium Citrate pH 6.0 was used for antigen retrieval.