

**Product Name: Cyclin E1 Rabbit Monoclonal antibody**  
**Catalog #: AMRe04068**



## Summary

<b>Production Name</b>	Cyclin E1 Rabbit Monoclonal antibody
<b>Description</b>	Recombinant Rabbit Monoclonal antibody
<b>Host</b>	Rabbit
<b>Application</b>	WB
<b>Reactivity</b>	Human

## Performance

<b>Conjugation</b>	Unconjugated
<b>Modification</b>	Unmodified
<b>Isotype</b>	IgG
<b>Clonality</b>	Monoclonal Antibody
<b>Form</b>	Liquid
<b>Storage</b>	Store at 4°C short term. Aliquot and store at -20°C long term. Avoid freeze/thaw cycles.
<b>Buffer</b>	50mM Tris-Glycine(pH 7.4), 0.15M NaCl, 40% Glycerol, 0.01% Sodium azide and 0.05% protective protein
<b>Purification</b>	Affinity Purified

## Immunogen

<b>Gene Name</b>	CCNE1
<b>Alternative Names</b>	CCNE1; CCNE; G1/S-specific cyclin-E1
<b>Gene ID</b>	898
<b>SwissProt ID</b>	P24864.

## Application

<b>Dilution Ratio</b>	WB: 1:500-1:1000
<b>Molecular Weight</b>	Calculated MW: 47 kDa; Observed MW: 47 kDa

## Background

Essential for the control of the cell cycle at the G1/S (start) transition. a member of the highly conserved cyclin family,

**Product Name: Cyclin E1 Rabbit Monoclonal antibody**  
**Catalog #: AMRe04068**

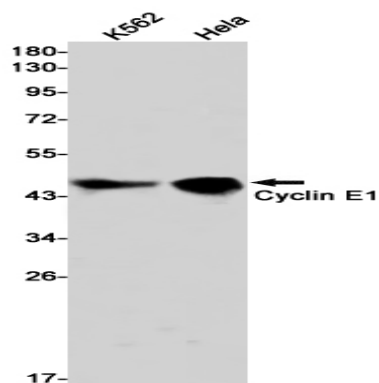


whose members are characterized by a dramatic periodicity in protein abundance through the cell cycle. Cyclins function as regulators of CDK kinases.

## Research Area

Cell Biology

## Image Data



Western blot analysis of Cyclin E1 in K562, HeLa lysates using Cyclin E1 antibody.

## Note

For research use only.