

Product Name: Caldesmon Rabbit Monoclonal Antibody**Catalog #: AMRe04057**

For research use only.

Summary

Description	Recombinant rabbit monoclonal antibody
Host	Rabbit
Application	WB,IHC,IP
Reactivity	Human,Mouse,Rat
Conjugation	Unconjugated
Modification	Unmodified
Isotype	IgG
Clonality	Monoclonal
Form	Liquid
Concentration	0.3mg/ml. The concentration of this product may be batch-dependent.
Storage	Aliquot and store at -20°C (valid for 12 months). Avoid freeze/thaw cycles.
Shipping	Ice bags
Buffer	50mM Tris-Glycine(pH 7.4), 0.15M NaCl, 40% Glycerol, 0.01% Sodium azide and 0.05% protective protein
Purification	Affinity Purification

Application

Dilution Ratio	WB 1:500-1:1000,IHC 1:50-1:100,IP 1:20-1:50
Molecular Weight	Calculated MW: 93 kDa; Observed MW: 70-80 kDa

Antigen Information

Gene Name	CALD1
Alternative Names	CDM; HCAD; LCAD; H-CAD; L-CAD; NAG22
Gene ID	800
SwissProt ID	Q05682
Immunogen	A synthetic peptide corresponding to target protein

Background

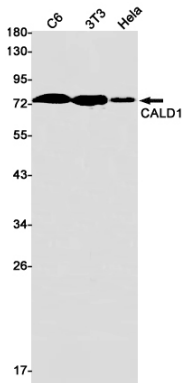
Actin- and myosin-binding protein implicated in the regulation of actomyosin interactions in smooth muscle and nonmuscle cells (could act as a bridge between myosin and actin filaments). Stimulates actin binding of tropomyosin which increases the

stabilization of actin filament structure. In muscle tissues, inhibits the actomyosin ATPase by binding to F-actin.

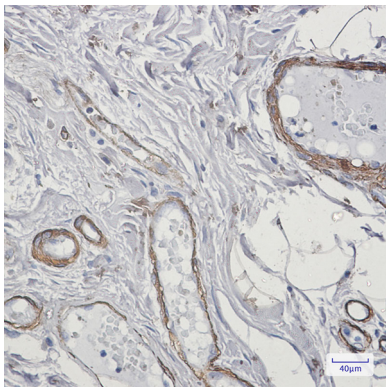
Research Area

Cell Biology

Image Data



Western blot analysis of CALD1 in C6, 3T3, HeLa lysates using Caldesmon antibody.



Immunohistochemistry analysis of paraffin-embedded Human colon cancer using Caldesmon antibody. High-pressure and temperature Sodium Citrate pH 6.0 was used for antigen retrieval.