
Product Name: Cyclin B1 Rabbit Monoclonal Antibody**Catalog #: AMRe04051**

For research use only.

Summary

Description	Recombinant rabbit monoclonal antibody
Host	Rabbit
Application	WB,ICC/IF,IP
Reactivity	Human
Conjugation	Unconjugated
Modification	Unmodified
Isotype	IgG
Clonality	Monoclonal
Form	Liquid
Concentration	0.51mg/ml. The concentration of this product may be batch-dependent.
Storage	Aliquot and store at -20°C (valid for 12 months). Avoid freeze/thaw cycles.
Shipping	Ice bags
Buffer	50mM Tris-Glycine(pH 7.4), 0.15M NaCl, 40% Glycerol, 0.01% Sodium azide and 0.05% protective protein
Purification	Affinity Purification

Application

Dilution Ratio	WB 1:500-1:1000,ICC/IF 1:50-1:200,IP 1:20-1:50
Molecular Weight	Calculated MW: 48 kDa; Observed MW: 55 kDa

Antigen Information

Gene Name	CCNB1
Alternative Names	CCNB1; CCNB; G2/mitotic-specific cyclin-B1
Gene ID	891
SwissProt ID	P14635
Immunogen	A synthetic peptide corresponding to target protein

Background

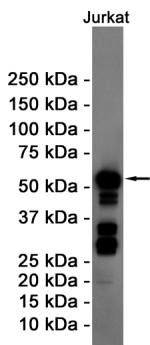
Essential for the control of the cell cycle at the G2/M (mitosis) transition. a member of the highly conserved cyclin family, whose members are characterized by a dramatic periodicity in protein abundance through the cell cycle. Cyclins function as regulators

of CDK kinases.

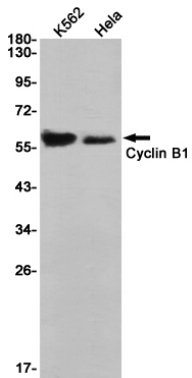
Research Area

Cell Biology

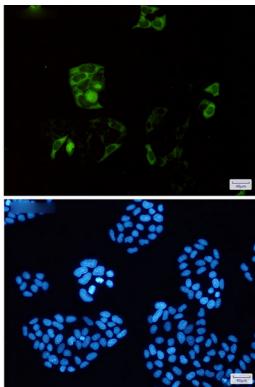
Image Data



Western blot analysis of Cyclin B1 in Jurkat lysates using Cyclin B1 antibody.



Western blot analysis of Cyclin B1 in K562, HeLa lysates using Cyclin B1 antibody.



Immunocytochemistry analysis of Cyclin B1 (green) in HeLa using Cyclin B1 antibody, and DAPI (blue)