
Product Name: GSK3 alpha/beta Rabbit Monoclonal Antibody**Catalog #: AMRe04048**

For research use only.

Summary

Description	Recombinant rabbit monoclonal antibody
Host	Rabbit
Application	WB
Reactivity	Human,Rat,Hamster
Conjugation	Unconjugated
Modification	Unmodified
Isotype	IgG
Clonality	Monoclonal
Form	Liquid
Concentration	0.5mg/ml. The concentration of this product may be batch-dependent.
Storage	Aliquot and store at -20°C (valid for 12 months). Avoid freeze/thaw cycles.
Shipping	Ice bags
Buffer	50mM Tris-Glycine(pH 7.4), 0.15M NaCl, 40% Glycerol, 0.01% Sodium azide and 0.05% protective protein
Purification	Affinity Purification

Application

Dilution Ratio	WB 1:500-1:1000
Molecular Weight	Calculated MW: 51 kDa; Observed MW: 51,47 kDa

Antigen Information

Gene Name	GSK3A
Alternative Names	Serine/threonine-protein kinase GSK3A
Gene ID	2931
SwissProt ID	P49840
Immunogen	A synthetic peptide of human GSK3 alpha

Background

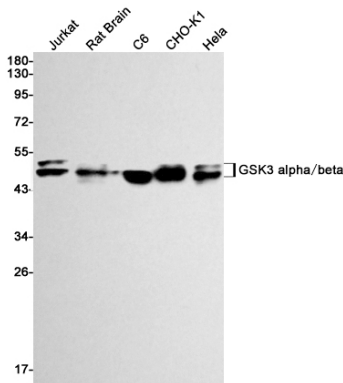
GSK3A a proline-directed protein kinase of the GSK family. Implicated in the control of several regulatory proteins including glycogen synthase, Myb, and c-Jun. GSK3 and GSK3 have similar functions. GSK3 phosphorylates tau, the principal component

of neurofibrillary tangles in Alzheimer disease and is required for maximal production of amyloid plaque peptides by secretase.

Research Area

Neuroscience

Image Data



Western blot analysis of GSK3 alpha + beta in Jurkat, rat Brain, C6, CHO-K1, HeLa lysates using GSK3 alpha/beta antibody.