
Product Name: LRP1 Rabbit Monoclonal Antibody**Catalog #: AMRe04043**

For research use only.

Summary

Description	Recombinant rabbit monoclonal antibody
Host	Rabbit
Application	WB,IHC,IF,IP,ELISA
Reactivity	Human,Mouse,Rat
Conjugation	Unconjugated
Modification	Unmodified
Isotype	IgG
Clonality	Monoclonal
Form	Liquid
Concentration	0.3mg/ml. The concentration of this product may be batch-dependent.
Storage	Aliquot and store at -20°C (valid for 12 months). Avoid freeze/thaw cycles.
Shipping	Ice bags
Buffer	50mM Tris-Glycine(pH 7.4), 0.15M NaCl, 40% Glycerol, 0.01% Sodium azide and 0.05% protective protein
Purification	Affinity Purification

Application

Dilution Ratio	IHC 1:200-1:1000;WB 1:1000-1:5000;IF 1:200-1:1000;ELISA 1:5000-1:20000;IP 1:50-1:200,
Molecular Weight	Calculated MW: 505 kDa; Observed MW: 85 kDa

Antigen Information

Gene Name	LRP1
Alternative Names	A2MR; alpha 2MR; Alpha 2 macroglobulin receptor; CD91; APR; LRP1; LRP85; TGFBR5
Gene ID	4035
SwissProt ID	Q07954
Immunogen	A synthetic peptide of human LRP1

Background

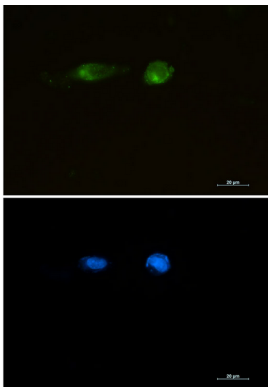
Endocytic receptor involved in endocytosis and in phagocytosis of apoptotic cells. Required for early embryonic development. Involved in cellular lipid homeostasis. Involved in the plasma clearance of chylomicron remnants and activated LRPAP1 (alpha

2-macroglobulin), as well as the local metabolism of complexes between plasminogen activators and their endogenous inhibitors. May modulate cellular events, such as APP metabolism, kinase-dependent intracellular signaling, neuronal calcium signaling as well as neurotransmission. Functions as a receptor for *Pseudomonas aeruginosa* exotoxin A.

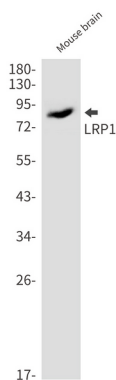
Research Area

Neuroscience

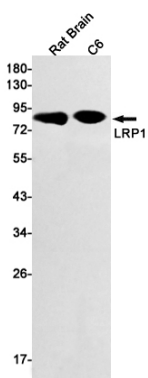
Image Data



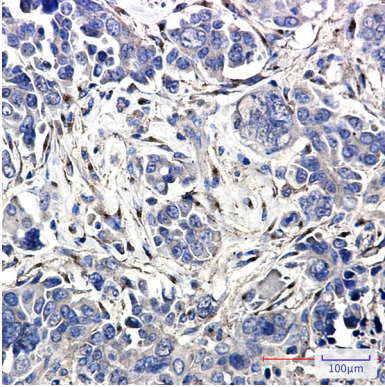
Immunocytochemistry analysis of LRP1 (green) in U87-MG using LRP1 antibody, and DAPI (blue).



Western blot analysis of LRP1 in mouse brain lysates using LRP1 antibody.



Western blot analysis of LRP1 in rat Brain, C6 lysates using LRP1 antibody



Immunohistochemistry analysis of paraffin-embedded Human Cholangiocarcinoma using LRP1 antibody. High-pressure and temperature Sodium Citrate pH 6.0 was used for antigen retrieval.