
Product Name: Ferritin Light Chain Rabbit Monoclonal Antibody**Catalog #: AMRe04005**

For research use only.

Summary

Description	Recombinant rabbit monoclonal antibody
Host	Rabbit
Application	WB,FC
Reactivity	Human, Mouse, Rat
Conjugation	Unconjugated
Modification	Unmodified
Isotype	IgG
Clonality	Monoclonal
Form	Liquid
Concentration	1mg/ml. The concentration of this product may be batch-dependent.
Storage	Aliquot and store at -20°C (valid for 12 months). Avoid freeze/thaw cycles.
Shipping	Ice bags
Buffer	Liquid in 50mM Tris-Glycine(pH 7.4), 0.15M NaCl, 40%Glycerol, 0.01% sodium azide and 0.05% protective protein.
Purification	Affinity Purification

Application

Dilution Ratio	WB 1:500-1:1000,FC 1:50-1:100
Molecular Weight	Calculated MW:20 kDa;Observed MW: 20 kDa

Antigen Information

Gene Name	FTL
Alternative Names	Ferritin L chain; Ferritin L subunit; Ferritin light chain; Ferritin light polypeptide; ferritin light polypeptide like 3; FTL; LFTD; NBIA 3;
Gene ID	2512
SwissProt ID	P02792
Immunogen	A synthetic peptide of human Ferritin light chain

Background

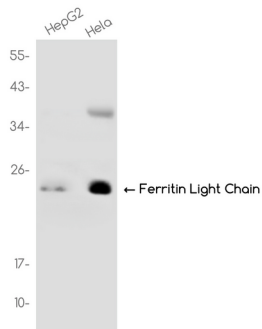
Stores iron in a soluble, non-toxic, readily available form. Important for iron homeostasis. Iron is taken up in the ferrous form

and deposited as ferric hydroxides after oxidation. Also plays a role in delivery of iron to cells. Mediates iron uptake in capsule cells of the developing kidney.

Research Area

Neuroscience

Image Data



Western blot analysis of Ferritin Light Chain in HepG2, HeLa lysates using Ferritin Light Chain antibody.