
Product Name: Tropomyosin alpha 1 Chain Rabbit Monoclonal Antibody**Catalog #: AMRe03995**

For research use only.

Summary

Description	Recombinant rabbit monoclonal antibody
Host	Rabbit
Application	WB,IHC
Reactivity	Human, Mouse, Rat
Conjugation	Unconjugated
Modification	Unmodified
Isotype	IgG
Clonality	Monoclonal
Form	Liquid
Concentration	
Storage	Aliquot and store at -20°C (valid for 12 months). Avoid freeze/thaw cycles.
Shipping	Ice bags
Buffer	Liquid in 50mM Tris-Glycine(pH 7.4), 0.15M NaCl, 40%Glycerol, 0.01% sodium azide and 0.05% protective protein.
Purification	Affinity Purification

Application

Dilution Ratio	WB 1:500-1:1000,IHC 1:50-1:100
Molecular Weight	Calculated MW:33 kDa;Observed MW: 33 kDa

Antigen Information

Gene Name	TPM1
Alternative Names	TPM1; C15orf13; TMSA; Tropomyosin alpha-1 chain; Alpha-tropomyosin; Tropomyosin-1
Gene ID	7168
SwissProt ID	P09493
Immunogen	A synthetic peptide of human TPM1

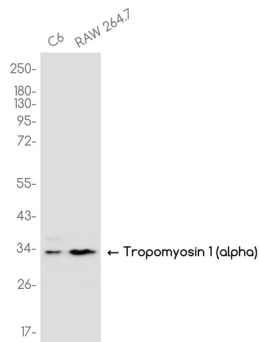
Background

Binds to actin filaments in muscle and non-muscle cells. Plays a central role, in association with the troponin complex, in the calcium dependent regulation of vertebrate striated muscle contraction.

Research Area

Signal Transduction

Image Data



Western blot analysis of Tropomyosin alpha 1 Chain in C6, RAW 264.7 lysates using Tropomyosin alpha 1 Chain antibody.