

Product Name: Ferritin Heavy Chain Rabbit Monoclonal Antibody**Catalog #: AMRe03990**

For research use only.

Summary

Description	Recombinant rabbit monoclonal antibody
Host	Rabbit
Application	WB,IHC
Reactivity	Mouse, Rat
Conjugation	Unconjugated
Modification	Unmodified
Isotype	IgG
Clonality	Monoclonal
Form	Liquid
Concentration	1mg/ml. The concentration of this product may be batch-dependent.
Storage	Aliquot and store at -20°C (valid for 12 months). Avoid freeze/thaw cycles.
Shipping	Ice bags
Buffer	Liquid in 50mM Tris-Glycine(pH 7.4), 0.15M NaCl, 40%Glycerol, 0.01% sodium azide and 0.05% protective protein.
Purification	Affinity Purification

Application

Dilution Ratio	WB 1:500-1:1000,IHC 1:50-1:100
Molecular Weight	Calculated MW:21 kDa;Observed MW: 21 kDa

Antigen Information

Gene Name	Fth1
Alternative Names	FHC; Fth; HFt; MFH
Gene ID	14319.0
SwissProt ID	P09528
Immunogen	A synthetic peptide of mouse Ferritin Heavy Chain

Background

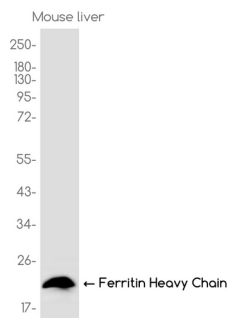
Stores iron in a soluble, non-toxic, readily available form (By similarity).Important for iron homeostasis (By similarity).Has ferroxidase activity (By similarity).Iron is taken up in the ferrous form and deposited as ferric hydroxides after oxidation (By

similarity).Also plays a role in delivery of iron to cells (PubMed:19154717).Mediates iron uptake in capsule cells of the developing kidney (PubMed:19154717).

Research Area

Neuroscience

Image Data



Western blot analysis of Ferritin Heavy Chain in Mouse liver lysates using Ferritin Heavy Chain antibody.