

## Summary

<b>Production Name</b>	STAT3 Rabbit Monoclonal Antibody
<b>Description</b>	Rabbit Monoclonal antibody
<b>Host</b>	Rabbit
<b>Application</b>	WB,IHC-F,IHC-P,ICC/IF,FC
<b>Reactivity</b>	Human, Mouse, Rat

## Performance

<b>Conjugation</b>	Unconjugated
<b>Modification</b>	Unmodified
<b>Isotype</b>	IgG
<b>Clonality</b>	Monoclonal
<b>Form</b>	Liquid
<b>Storage</b>	Store at 4°C short term. Aliquot and store at -20°C long term. Avoid freeze/thaw cycles.
<b>Buffer</b>	Liquid in 50mM Tris-Glycine(pH 7.4), 0.15M NaCl, 40%Glycerol, 0.01% sodium azide and 0.05% protective protein.
<b>Purification</b>	Affinity Purification

## Immunogen

<b>Gene Name</b>	STAT3
<b>Alternative Names</b>	STAT3; APRF; Signal transducer and activator of transcription 3; Acute-phase response factor
<b>Gene ID</b>	6774
<b>SwissProt ID</b>	P40763.

## Application

<b>Dilution Ratio</b>	WB: 1:500-1:1000 IHC: 1:50-1:100 IF: 1:50-1:200 FC: 1:50-1:100
<b>Molecular Weight</b>	Calculated MW:88 kDa;Observed MW: 88 kDa

## Background

**Product Name: STAT3 Rabbit Monoclonal Antibody**  
**Catalog #: AMRe03947**

---

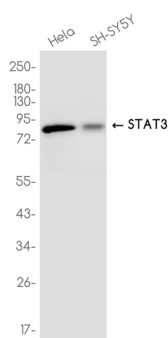


The protein encoded by this gene is a member of the STAT protein family. In response to cytokines and growth factors, STAT family members are phosphorylated by the receptor associated kinases, and then form homo- or heterodimers that translocate to the cell nucleus where they act as transcription activators.

## Research Area

Signal Transduction

## Image Data



Western blot analysis of STAT3 in HeLa, SH-SY5Y lysates using STAT3 antibody.

## Note

For research use only.