
Product Name: MonoMethyl-Histone H3 (Lys4) Rabbit Monoclonal Antibody**Catalog #: AMRe03934**

For research use only.

Summary

Description	Recombinant rabbit monoclonal antibody
Host	Rabbit
Application	WB,IHC,ICC/IF
Reactivity	Human, Mouse, Rat
Conjugation	Unconjugated
Modification	Methylated
Isotype	IgG
Clonality	Monoclonal
Form	Liquid
Concentration	0.5mg/ml. The concentration of this product may be batch-dependent.
Storage	Aliquot and store at -20°C (valid for 12 months). Avoid freeze/thaw cycles.
Shipping	Ice bags
Buffer	Liquid in 50mM Tris-Glycine(pH 7.4), 0.15M NaCl, 40%Glycerol, 0.01% sodium azide and 0.05% protective protein.
Purification	Affinity Purification

Application

Dilution Ratio	WB 1:500-1:1000,IHC 1:50-1:100,ICC/IF 1:50-1:200
Molecular Weight	Calculated MW:15 kDa;Observed MW: 17 kDa

Antigen Information

Gene Name	H3C1
Alternative Names	H3R8me; Histone H3/b; Histone H3/c; Histone H3/d; Histone H3/f
Gene ID	8350
SwissProt ID	P68431
Immunogen	A synthetic Methylated peptide corresponding to residues target protein

Background

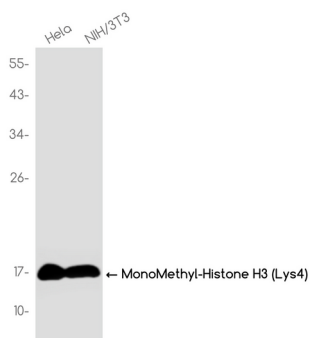
Histone post-translational modifications (PTMs) are key mechanisms of epigenetics that modulate chromatin structures, termed as "histone code" . The PTMs on histone including acetylation, methylation, phosphorylation and novel acylations

directly affect the accessibility of chromatin to transcription factors and other epigenetic regulators, altering genome stability, gene transcription, etc. Histone methylation occurs primarily at lysine and arginine residues on the amino terminal of core histones. Methylation of histones can either increase or decrease transcription of genes, depending on which amino acids (Lys or Arg) in the histones are methylated and how many methyl groups are attached (mono-, di-, tri-methylation on Lys, mono-di-symmetric/asymmetric methylation on Arg). Mostly, lysine methylation occurs primarily on histone H3 Lys4, 9, 27, 36, 79 and H4 Lys20, while Arginine methylation occurs primarily on histone H3 Arg2, 8, 17, 26 and H4 Arg3. Histone methylases (HMTs) and histone demethylases (HDMs) are major regulating factors.

Research Area

Epigenetics and Nuclear Signaling

Image Data



Western blot analysis of MonoMethyl-Histone H3 (Lys4) in HeLa, 3T3 lysates using MonoMethyl-Histone H3 (Lys4) antibody.