
Product Name: BBS1 Rabbit Monoclonal Antibody**Catalog #: AMRe03917**

For research use only.

Summary

Description	Recombinant rabbit monoclonal antibody
Host	Rabbit
Application	WB,ICC/IF
Reactivity	Human, Mouse, Rat
Conjugation	Unconjugated
Modification	Unmodified
Isotype	IgG
Clonality	Monoclonal
Form	Liquid
Concentration	
Storage	Aliquot and store at -20°C (valid for 12 months). Avoid freeze/thaw cycles.
Shipping	Ice bags
Buffer	Liquid in 50mM Tris-Glycine(pH 7.4), 0.15M NaCl, 40%Glycerol, 0.01% sodium azide and 0.05% protective protein.
Purification	Affinity Purification

Application

Dilution Ratio	WB 1:500-1:1000,ICC/IF 1:50-1:200
Molecular Weight	Calculated MW:65 kDa;Observed MW: 65 kDa

Antigen Information

Gene Name	BBS1
Alternative Names	BBS1,BBS2L2,Bardet-Biedl syndrome 1 protein,BBS2-like protein 2
Gene ID	582.0
SwissProt ID	Q8NFJ9
Immunogen	A synthetic peptide of human BBS1

Background

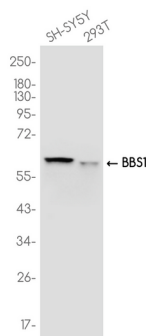
The BBSome complex is thought to function as a coat complex required for sorting of specific membrane proteins to the

primary cilia. The BBSome complex is required for ciliogenesis but is dispensable for centriolar satellite function. This ciliogenic function is mediated in part by the Rab8 GDP/GTP exchange factor, which localizes to the basal body and contacts the BBSome. Rab8(GTP) enters the primary cilium and promotes extension of the ciliary membrane. Firstly the BBSome associates with the ciliary membrane and binds to RAB3IP/Rabin8, the guanosyl exchange factor (GEF) for Rab8 and then the Rab8-GTP localizes to the cilium and promotes docking and fusion of carrier vesicles to the base of the ciliary membrane. The BBSome complex, together with the LTZL1, controls SMO ciliary trafficking and contributes to the sonic hedgehog (SHH) pathway regulation. Required for proper BBSome complex assembly and its ciliary localization (PubMed:17574030, PubMed:22072986). Plays a role in olfactory cilium biogenesis/maintenance and trafficking (By similarity).

Research Area

Neuroscience

Image Data



Western blot analysis of BBS1 in SH-SY5Y, 293T lysates using BBS1 antibody.