

Product Name: MUC1 Rabbit Monoclonal Antibody**Catalog #: AMRe03916**

For research use only.

Summary

Description	Recombinant rabbit monoclonal antibody
Host	Rabbit
Application	WB,IHC
Reactivity	Human
Conjugation	Unconjugated
Modification	Unmodified
Isotype	IgG
Clonality	Monoclonal
Form	Liquid
Concentration	
Storage	Aliquot and store at -20°C (valid for 12 months). Avoid freeze/thaw cycles.
Shipping	Ice bags
Buffer	Liquid in 50mM Tris-Glycine(pH 7.4), 0.15M NaCl, 40%Glycerol, 0.01% sodium azide and 0.05% protective protein.
Purification	Affinity Purification

Application

Dilution Ratio	WB 1:500-1:1000,IHC 1:50-1:100
Molecular Weight	Calculated MW:122 kDa;Observed MW: 122 kDa

Antigen Information

Gene Name	MUC1
Alternative Names	Breast carcinoma-associated antigen DF3;CA 15-3;Episialin;H23AG;Carcinoma-associated mucin
Gene ID	4582
SwissProt ID	P15941
Immunogen	A synthetic peptide of human MUC1

Background

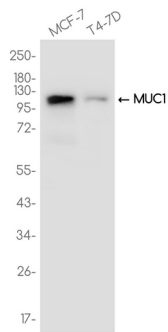
The alpha subunit has cell adhesive properties. Can act both as an adhesion and an anti-adhesion protein. May provide a

protective layer on epithelial cells against bacterial and enzyme attack.

Research Area

Tumor Associated

Image Data



Western blot analysis of MUC1 in MCF-7, T4-7D lysates using MUC1 antibody.