

---

**Product Name: Caveolin 2 Rabbit Monoclonal Antibody****Catalog #: AMRe03907**

For research use only.

**Summary**

<b>Description</b>	Recombinant rabbit monoclonal antibody
<b>Host</b>	Rabbit
<b>Application</b>	WB,ICC/IF
<b>Reactivity</b>	Human, Mouse, Rat
<b>Conjugation</b>	Unconjugated
<b>Modification</b>	Unmodified
<b>Isotype</b>	IgG
<b>Clonality</b>	Monoclonal
<b>Form</b>	Liquid
<b>Concentration</b>	
<b>Storage</b>	Aliquot and store at -20°C (valid for 12 months). Avoid freeze/thaw cycles.
<b>Shipping</b>	Ice bags
<b>Buffer</b>	Liquid in 50mM Tris-Glycine(pH 7.4), 0.15M NaCl, 40%Glycerol, 0.01% sodium azide and 0.05% protective protein.
<b>Purification</b>	Affinity Purification

**Application**

<b>Dilution Ratio</b>	WB 1:500-1:1000,ICC/IF 1:50-1:200
<b>Molecular Weight</b>	Calculated MW:18 kDa;Observed MW: 18 kDa

**Antigen Information**

<b>Gene Name</b>	CAV2
<b>Alternative Names</b>	CAV2; Caveolae protein 20 Kd; Caveolin 2; Caveolin 2 isoform a and b; Caveolin-2
<b>Gene ID</b>	858
<b>SwissProt ID</b>	P51636
<b>Immunogen</b>	A synthetic peptide of human Caveolin-2

**Background**

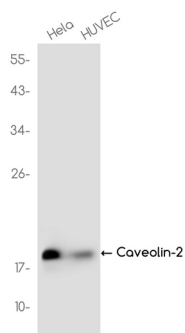
May act as a scaffolding protein within caveolar membranes. Interacts directly with G-protein alpha subunits and can functionally regulate their activity. Acts as an accessory protein in conjunction with CAV1 in targeting to lipid rafts and driving

caveolae formation.

## Research Area

Tags & Cell Markers

## Image Data



Western blot analysis of Caveolin 2 in HeLa, HUVEC lysates using Caveolin 2 antibody.