

Product Name: LC3B Rabbit Monoclonal Antibody**Catalog #: AMRe03899**

For research use only.

Summary

Description	Recombinant rabbit monoclonal antibody
Host	Rabbit
Application	WB,ICC/IF,IP
Reactivity	Human,Mouse,Rat
Conjugation	Unconjugated
Modification	Unmodified
Isotype	IgG
Clonality	Monoclonal
Form	Liquid
Concentration	0.3mg/ml. The concentration of this product may be batch-dependent.
Storage	Aliquot and store at -20°C (valid for 12 months). Avoid freeze/thaw cycles.
Shipping	Ice bags
Buffer	Rabbit IgG in phosphate buffered saline , pH 7.4, 150mM NaCl, 0.02% sodium azide and 50% glycerol.
Purification	Affinity Chromatography

Application

Dilution Ratio	WB 1:500-1:1000,ICC/IF 1:50-1:200,IP 1:50-1:100
Molecular Weight	Calculated MW: 15 kDa; Observed MW: 14,16 kDa

Antigen Information

Gene Name	MAP1LC3B
Alternative Names	MAP1LC3B
Gene ID	81631
SwissProt ID	Q9GZQ8
Immunogen	

Background

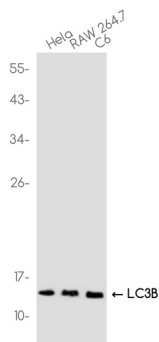
Ubiquitin-like modifier involved in formation of autophagosomal vacuoles (autophagosomes). Plays a role in mitophagy which contributes to regulate mitochondrial quantity and quality by eliminating the mitochondria to a basal level to fulfill cellular

energy requirements and preventing excess ROS production.

Research Area

Signal Transduction

Image Data



Western blot analysis of LC3B in HeLa , RAW 264.7 , C6 lysates using LC3B antibody.