

---

**Product Name: CD86 Rabbit Monoclonal Antibody****Catalog #: AMRe03894**

For research use only.

**Summary**

<b>Description</b>	Recombinant rabbit monoclonal antibody
<b>Host</b>	Rabbit
<b>Application</b>	WB,IHC,ICC/IF,FC,IP
<b>Reactivity</b>	Human,Rat
<b>Conjugation</b>	Unconjugated
<b>Modification</b>	Unmodified
<b>Isotype</b>	IgG
<b>Clonality</b>	Monoclonal
<b>Form</b>	Liquid
<b>Concentration</b>	1.48mg/ml. The concentration of this product may be batch-dependent.
<b>Storage</b>	Aliquot and store at -20°C (valid for 12 months). Avoid freeze/thaw cycles.
<b>Shipping</b>	Ice bags
<b>Buffer</b>	Rabbit IgG in phosphate buffered saline , pH 7.4, 150mM NaCl, 0.02% sodium azide and 50% glycerol.
<b>Purification</b>	Affinity Chromatography

**Application**

<b>Dilution Ratio</b>	WB 1:500-1:1000,IHC 1:50-1:100,ICC/IF 1:50-1:200,FC 1:50-1:100,IP 1:50-1:100
<b>Molecular Weight</b>	Calculated MW: 38 kDa; Observed MW: 70 kDa

**Antigen Information**

<b>Gene Name</b>	CD86
<b>Alternative Names</b>	CD86; CD28LG2; T-lymphocyte activation antigen CD86; Activation B7-2 antigen; B70; BU63; CTLA-4 counter-receptor B7.2; FUN-1; CD antigen CD86
<b>Gene ID</b>	942
<b>SwissProt ID</b>	P42081
<b>Immunogen</b>	Recombinant protein of human CD86

**Background**

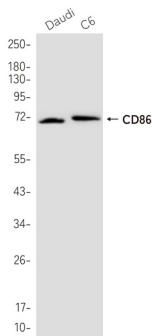
Receptor involved in the costimulatory signal essential for T-lymphocyte proliferation and interleukin-2 production, by binding

CD28 or CTLA-4. May play a critical role in the early events of T-cell activation and costimulation of naive T-cells, such as deciding between immunity and anergy that is made by T-cells within 24 hours after activation. Isoform 2 interferes with the formation of CD86 clusters, and thus acts as a negative regulator of T-cell activation.

## Research Area

Immunology

## Image Data



Western blot analysis of CD86 in Daudi, C6 lysates using CD86 antibody.