

---

**Product Name: XBP1 Rabbit Monoclonal antibody****Catalog #: AMRe03817**

For research use only.

**Summary**

<b>Description</b>	Recombinant rabbit monoclonal antibody
<b>Host</b>	Rabbit
<b>Application</b>	WB,IP
<b>Reactivity</b>	Human,Mouse
<b>Conjugation</b>	Unconjugated
<b>Modification</b>	Unmodified
<b>Isotype</b>	IgG
<b>Clonality</b>	Monoclonal Antibody
<b>Form</b>	Liquid
<b>Concentration</b>	0.98mg/ml. The concentration of this product may be batch-dependent.
<b>Storage</b>	Aliquot and store at -20°C (valid for 12 months). Avoid freeze/thaw cycles.
<b>Shipping</b>	Ice bags
<b>Buffer</b>	50mM Tris-Glycine(pH 7.4), 0.15M NaCl, 40% Glycerol, 0.01% Sodium azide and 0.05% protective protein
<b>Purification</b>	Affinity Purified

**Application**

<b>Dilution Ratio</b>	WB 1:500-1:1000,IP 1:20-1:50
<b>Molecular Weight</b>	Calculated MW: 29 kDa; Observed MW: 29 kDa

**Antigen Information**

<b>Gene Name</b>	XBP1
<b>Alternative Names</b>	XBP1; TREB5; XBP2; X-box-binding protein 1; XBP-1; Tax-responsive element-binding protein 5
<b>Gene ID</b>	7494
<b>SwissProt ID</b>	P17861
<b>Immunogen</b>	Recombinant protein of human XBP1

**Background**

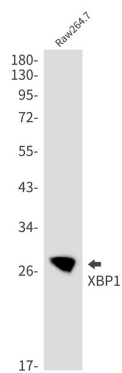
Acts during endoplasmic reticulum stress (ER) by activating unfolded protein response (UPR) target genes via direct binding to

the UPR element (UPRE). Binds DNA preferably to the CRE-like element 5'-GATGACGTG[TG]N(3)[AT]T-3', and also to some TPA response elements (TRE). Binds to the HLA DR-alpha promoter. Binds to the Tax-responsive element (TRE) of HTLV-I.

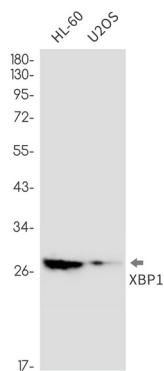
## Research Area

Epigenetics and Nuclear Signaling

## Image Data



Western blot analysis of XBP1 in Raw264.7 lysates using XBP1 antibody.



Western blot analysis of XBP1 in HL-60, U2OS lysates using XBP1 antibody.