
Product Name: KMT4 Rabbit Monoclonal antibody**Catalog #: AMRe03810**

For research use only.

Summary

Description	Recombinant rabbit monoclonal antibody
Host	Rabbit
Application	WB,IHC
Reactivity	Human,Mouse
Conjugation	Unconjugated
Modification	Unmodified
Isotype	IgG
Clonality	Monoclonal Antibody
Form	Liquid
Concentration	0.81mg/ml. The concentration of this product may be batch-dependent.
Storage	Aliquot and store at -20°C (valid for 12 months). Avoid freeze/thaw cycles.
Shipping	Ice bags
Buffer	50mM Tris-Glycine(pH 7.4), 0.15M NaCl, 40% Glycerol, 0.01% Sodium azide and 0.05% protective protein
Purification	Affinity Purified

Application

Dilution Ratio	WB 1:500-1:1000,IHC 1:50-1:100
Molecular Weight	Calculated MW: 165 kDa; Observed MW: 185 kDa

Antigen Information

Gene Name	DOT1L
Alternative Names	DOT 1; DOT1L; KMT4; Histone methyltransferase DOT1L; H3 lysine-79 specific
Gene ID	84444
SwissProt ID	Q8TEK3
Immunogen	Recombinant protein of human KMT4/Dot1L

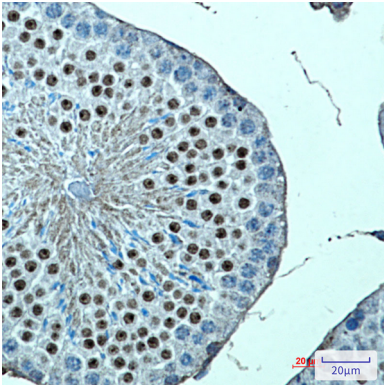
Background

Histone methyltransferase. Methylates 'Lys-79' of histone H3. Nucleosomes are preferred as substrate compared to free histones. Binds to DNA.

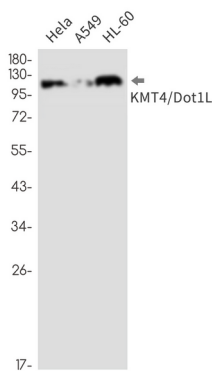
Research Area

Epigenetics and Nuclear Signaling

Image Data



Immunohistochemistry analysis of paraffin-embedded mouse testis using KMT4 antibody. High-pressure and temperature Sodium Citrate pH 6.0 was used for antigen retrieval.



Western blot analysis of KMT4/Dot1L in HeLa, A549, HL-60 lysates using KMT4/Dot1L antibody.