
Product Name: Phospho-Rb (Thr356) Rabbit Monoclonal Antibody**Catalog #: AMRe03807**

For research use only.

Summary

| | |
|----------------------|--|
| Description | Recombinant rabbit monoclonal antibody |
| Host | Rabbit |
| Application | WB,IHC,IP |
| Reactivity | Human,Rat |
| Conjugation | Unconjugated |
| Modification | Phosphorylated |
| Isotype | IgG |
| Clonality | Monoclonal |
| Form | Liquid |
| Concentration | 0.5mg/ml. The concentration of this product may be batch-dependent. |
| Storage | Aliquot and store at -20°C (valid for 12 months). Avoid freeze/thaw cycles. |
| Shipping | Ice bags |
| Buffer | 50mM Tris-Glycine(pH 7.4), 0.15M NaCl, 40% Glycerol, 0.01% Sodium azide and 0.05% protective protein |
| Purification | Affinity Purification |

Application

| | |
|-------------------------|--|
| Dilution Ratio | WB 1:500-1:1000,IHC 1:50-1:100,IP 1:20-1:50 |
| Molecular Weight | Calculated MW: 106 kDa; Observed MW: 110 kDa |

Antigen Information

| | |
|--------------------------|---|
| Gene Name | RB1 |
| Alternative Names | RB1; Retinoblastoma-associated protein; p105-Rb; pRb; Rb; pp110 |
| Gene ID | 5925 |
| SwissProt ID | P06400 |
| Immunogen | A synthetic Phosphorylated peptide corresponding to residues target protein |

Background

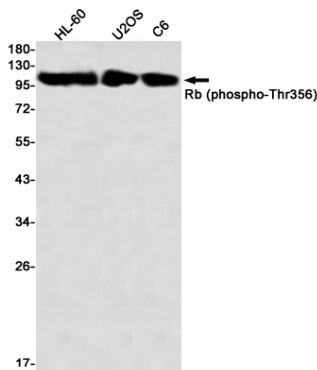
Cell cycle-dependent phosphorylation by a CDK inhibits Rb target binding and allows cell cycle progression. Rb inactivation and subsequent cell cycle progression likely requires an initial phosphorylation by cyclin D-CDK4/6 followed by cyclin E-CDK2

phosphorylation. Specificity of different CDK/cyclin complexes has been observed in vitro and cyclin D1 is required for Ser780 phosphorylation in vivo.

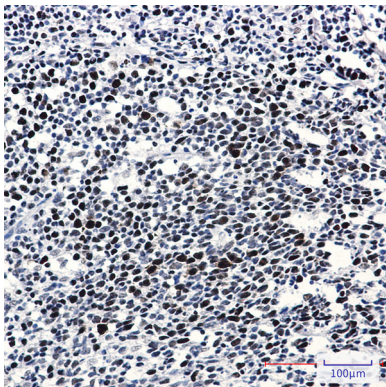
Research Area

Cell Biology

Image Data



Western blot analysis of Rb (Phospho-Thr356) in HL-60, U2OS, C6 lysates using Phospho-Rb (Thr356) antibody.



Immunohistochemistry analysis of paraffin-embedded Human tonsil using Rb (Phospho-Thr356) antibody. High-pressure and temperature Sodium Citrate pH 6.0 was used for antigen retrieval.