

---

**Product Name: xCT Rabbit Monoclonal Antibody****Catalog #: AMRe03803**

For research use only.

**Summary**

<b>Description</b>	Recombinant rabbit monoclonal antibody
<b>Host</b>	Rabbit
<b>Application</b>	WB,IHC,IF,IP,ELISA
<b>Reactivity</b>	Human,Mouse,Rat
<b>Conjugation</b>	Unconjugated
<b>Modification</b>	Unmodified
<b>Isotype</b>	IgG
<b>Clonality</b>	Monoclonal
<b>Form</b>	Liquid
<b>Concentration</b>	0.3mg/ml. The concentration of this product may be batch-dependent.
<b>Storage</b>	Aliquot and store at -20°C (valid for 12 months). Avoid freeze/thaw cycles.
<b>Shipping</b>	Ice bags
<b>Buffer</b>	50mM Tris-Glycine(pH 7.4), 0.15M NaCl, 40% Glycerol, 0.01% Sodium azide and 0.05% protective protein
<b>Purification</b>	Affinity Purification

**Application**

<b>Dilution Ratio</b>	IHC 1:200-1:1000;WB 1:1000-1:5000;IF 1:200-1:1000;ELISA 1:5000-1:20000;IP 1:50-1:200,
<b>Molecular Weight</b>	Calculated MW: 55 kDa; Observed MW: 55 kDa

**Antigen Information**

<b>Gene Name</b>	SLC7A11
<b>Alternative Names</b>	CCBR1; Cysteine/glutamate transporter; SLC7A11; solute carrier family 7; xCT
<b>Gene ID</b>	23657
<b>SwissProt ID</b>	Q9UPY5
<b>Immunogen</b>	

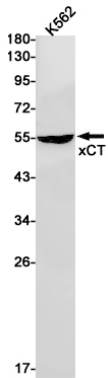
**Background**

Sodium-independent, high-affinity exchange of anionic amino acids with high specificity for anionic form of cystine and glutamate.

## Research Area

Signal Transduction

## Image Data



Western blot analysis of xCT in K562 lysates using xCT antibody.