

---

**Product Name: STAT1 Rabbit Monoclonal Antibody****Catalog #: AMRe03798**

For research use only.

**Summary**

<b>Description</b>	Recombinant rabbit monoclonal antibody
<b>Host</b>	Rabbit
<b>Application</b>	WB,IP
<b>Reactivity</b>	Human,Mouse,Rat
<b>Conjugation</b>	Unconjugated
<b>Modification</b>	Unmodified
<b>Isotype</b>	IgG
<b>Clonality</b>	Monoclonal
<b>Form</b>	Liquid
<b>Concentration</b>	0.68mg/ml. The concentration of this product may be batch-dependent.
<b>Storage</b>	Aliquot and store at -20°C (valid for 12 months). Avoid freeze/thaw cycles.
<b>Shipping</b>	Ice bags
<b>Buffer</b>	50mM Tris-Glycine(pH 7.4), 0.15M NaCl, 40% Glycerol, 0.01% Sodium azide and 0.05% protective protein
<b>Purification</b>	Affinity Purification

**Application**

<b>Dilution Ratio</b>	WB 1:500-1:1000,IP 1:20-1:50
<b>Molecular Weight</b>	Calculated MW: 87 kDa; Observed MW: 87 kDa

**Antigen Information**

<b>Gene Name</b>	STAT1
<b>Alternative Names</b>	STAT1; Signal transducer and activator of transcription 1-alpha/beta; Transcription factor ISGF-3 components p91/p84
<b>Gene ID</b>	6772
<b>SwissProt ID</b>	P42224
<b>Immunogen</b>	A synthetic peptide corresponding to target protein

**Background**

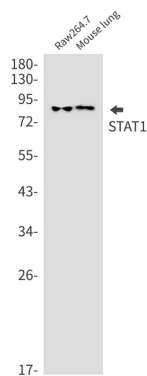
The protein encoded by this gene is a member of the STAT protein family. In response to cytokines and growth factors, STAT

family members are phosphorylated by the receptor associated kinases, and then form homo- or heterodimers that translocate to the cell nucleus where they act as transcription activators.

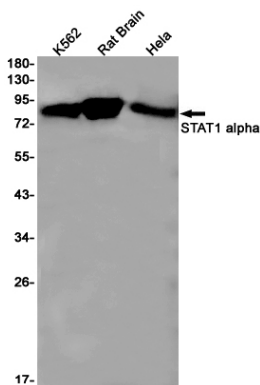
## Research Area

Signal Transduction

## Image Data



Western blot analysis of STAT1 in Raw264.7, mouse lung lysates using STAT1 antibody.



Western blot analysis of STAT1 alpha in K562, rat Brain, HeLa lysates using STAT1 alpha antibody.