

---

**Product Name: Phospho-STAT1 (Ser727) Rabbit Monoclonal antibody****Catalog #: AMRe03797**

For research use only.

**Summary**

<b>Description</b>	Recombinant rabbit monoclonal antibody
<b>Host</b>	Rabbit
<b>Application</b>	WB,IHC
<b>Reactivity</b>	Human,Mouse,Rat
<b>Conjugation</b>	Unconjugated
<b>Modification</b>	Phosphorylated
<b>Isotype</b>	IgG
<b>Clonality</b>	Monoclonal Antibody
<b>Form</b>	Liquid
<b>Concentration</b>	0.21mg/ml. The concentration of this product may be batch-dependent.
<b>Storage</b>	Aliquot and store at -20°C (valid for 12 months). Avoid freeze/thaw cycles.
<b>Shipping</b>	Ice bags
<b>Buffer</b>	50mM Tris-Glycine(pH 7.4), 0.15M NaCl, 40% Glycerol, 0.01% Sodium azide and 0.05% protective protein
<b>Purification</b>	Affinity Purified

**Application**

<b>Dilution Ratio</b>	WB 1:500-1:1000,IHC 1:50-1:100
<b>Molecular Weight</b>	Calculated MW: 87 kDa; Observed MW: 87 kDa

**Antigen Information**

<b>Gene Name</b>	STAT1
<b>Alternative Names</b>	STAT1; Signal transducer and activator of transcription 1-alpha/beta; Transcription factor ISGF-3 components p91/p84
<b>Gene ID</b>	6772
<b>SwissProt ID</b>	P42224
<b>Immunogen</b>	A synthetic phosphopeptide corresponding to residues surrounding Ser727 of human STAT1

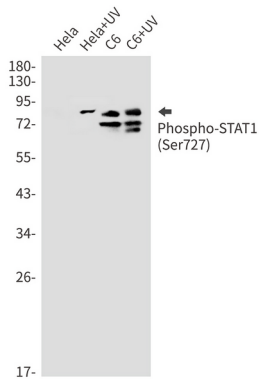
**Background**

The protein encoded by this gene is a member of the STAT protein family. In response to cytokines and growth factors, STAT family members are phosphorylated by the receptor associated kinases, and then form homo- or heterodimers that translocate to the cell nucleus where they act as transcription activators.

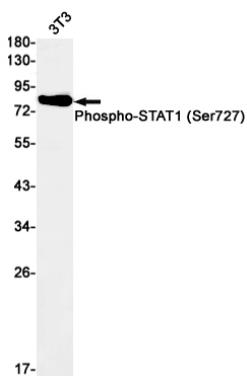
## Research Area

Signal Transduction

## Image Data



Western blot analysis of Phospho-STAT1 (Ser727) in HeLa, HeLa+UV, C6, C6+UV lysates using Phospho-STAT1 (Ser727) antibody.



Western blot analysis of Phospho-STAT1 (Ser727) in 3T3 lysates using Phospho-STAT1 (Ser727) antibody.