

Product Name: ERK1 Rabbit Monoclonal Antibody**Catalog #: AMRe03770**

For research use only.

Summary

| | |
|----------------------|--|
| Description | Recombinant rabbit monoclonal antibody |
| Host | Rabbit |
| Application | WB,IHC,IP |
| Reactivity | Human |
| Conjugation | Unconjugated |
| Modification | Unmodified |
| Isotype | IgG |
| Clonality | Monoclonal |
| Form | Liquid |
| Concentration | 0.64mg/ml. The concentration of this product may be batch-dependent. |
| Storage | Aliquot and store at -20°C (valid for 12 months). Avoid freeze/thaw cycles. |
| Shipping | Ice bags |
| Buffer | 50mM Tris-Glycine(pH 7.4), 0.15M NaCl, 40% Glycerol, 0.01% Sodium azide and 0.05% protective protein |
| Purification | Affinity Purification |

Application

| | |
|-------------------------|---|
| Dilution Ratio | WB 1:500-1:1000,IHC 1:50-1:100,IP 1:20-1:50 |
| Molecular Weight | Calculated MW: 43 kDa; Observed MW: 43 kDa |

Antigen Information

| | |
|--------------------------|---|
| Gene Name | MAPK3 |
| Alternative Names | MAPK3 |
| Gene ID | 5595 |
| SwissProt ID | P27361 |
| Immunogen | A synthetic peptide corresponding to target protein |

Background

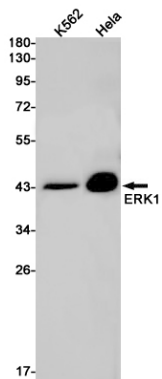
Serine/threonine kinase which acts as an essential component of the MAP kinase signal transduction pathway. MAPK1/ERK2 and MAPK3/ERK1 are the 2 MAPKs which play an important role in the MAPK/ERK cascade. They participate also in a signaling

cascade initiated by activated KIT and KITLG/SCF. Depending on the cellular context, the MAPK/ERK cascade mediates diverse biological functions such as cell growth, adhesion, survival and differentiation through the regulation of transcription, translation, cytoskeletal rearrangements.

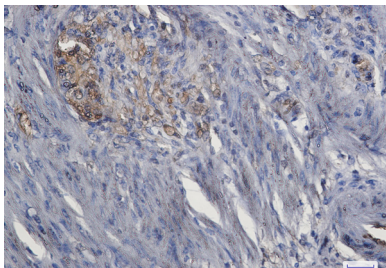
Research Area

Cell Biology

Image Data



Western blot analysis of ERK1 in K562, HeLa lysates using ERK1 antibody.



Immunohistochemistry analysis of paraffin-embedded Human colon cancer using ERK1 antibody. High-pressure and temperature Sodium Citrate pH 6.0 was used for antigen retrieval.