

Product Name: CDK6 Rabbit Monoclonal Antibody
Catalog #: AMRe03765



Summary

| | |
|------------------------|---------------------------------|
| Production Name | CDK6 Rabbit Monoclonal Antibody |
| Description | Rabbit Monoclonal antibody |
| Host | Rabbit |
| Application | WB,ICC/IF |
| Reactivity | Human |

Performance

| | |
|---------------------|--|
| Conjugation | Unconjugated |
| Modification | Unmodified |
| Isotype | IgG |
| Clonality | Monoclonal |
| Form | Liquid |
| Storage | Store at 4°C short term. Aliquot and store at -20°C long term. Avoid freeze/thaw cycles. |
| Buffer | 50mM Tris-Glycine(pH 7.4), 0.15M NaCl, 40% Glycerol, 0.01% Sodium azide and 0.05% protective protein |
| Purification | Affinity Purification |

Immunogen

| | |
|--------------------------|--|
| Gene Name | CDK6 |
| Alternative Names | CDK 6; Cell division protein kinase 6; Crk 2; Cyclin dependent kinase 6; p40; PLSTIRE; STQTL11 |
| Gene ID | 1021 |
| SwissProt ID | Q00534. |

Application

| | |
|-------------------------|--|
| Dilution Ratio | WB: 1:500-1:1000 IF: 1:50-1:200 |
| Molecular Weight | Calculated MW: 37 kDa; Observed MW: 37 kDa |

Background

Product Name: CDK6 Rabbit Monoclonal Antibody
Catalog #: AMRe03765

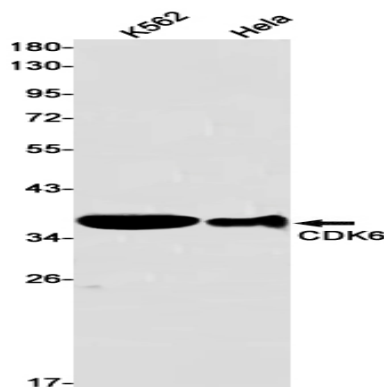


The cyclin-dependent kinases form complexes with their cyclin partners and with CDK inhibitors. CDK6 and CDK4 associate with the D-type cyclins and target the retinoblastoma protein, allowing passage through the G1/S phase restriction point.

Research Area

Signal Transduction

Image Data



Western blot analysis of CDK6 in K562, HeLa lysates using CDK6 antibody.

Note

For research use only.