
Product Name: Cathepsin B Rabbit Monoclonal Antibody**Catalog #: AMRe03763**

For research use only.

Summary

Description	Recombinant rabbit monoclonal antibody
Host	Rabbit
Application	WB,ICC/IF
Reactivity	Mouse,Rat
Conjugation	Unconjugated
Modification	Unmodified
Isotype	IgG
Clonality	Monoclonal
Form	Liquid
Concentration	0.63mg/ml. The concentration of this product may be batch-dependent.
Storage	Aliquot and store at -20°C (valid for 12 months). Avoid freeze/thaw cycles.
Shipping	Ice bags
Buffer	50mM Tris-Glycine(pH 7.4), 0.15M NaCl, 40% Glycerol, 0.01% Sodium azide and 0.05% protective protein
Purification	Affinity Purification

Application

Dilution Ratio	WB 1:500-1:1000,ICC/IF 1:50-1:200
Molecular Weight	Calculated MW: 37 kDa; Observed MW: 44,27,24 kDa

Antigen Information

Gene Name	Ctsb
Alternative Names	CB
Gene ID	13030.0
SwissProt ID	P10605
Immunogen	Recombinant protein of mouse Cathepsin B

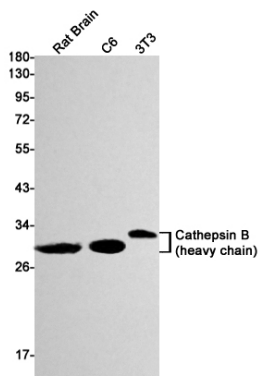
Background

Thiol protease which is believed to participate in intracellular degradation and turnover of proteins. Cleaves matrix extracellular phosphoglycoprotein MEPE. Has also been implicated in tumor invasion and metastasis.

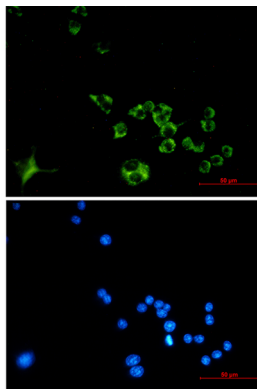
Research Area

Neuroscience

Image Data



Western blot analysis of Cathepsin B in rat Brain, C6, 3T3 lysates using Cathepsin B antibody.



Immunocytochemistry analysis of Cathepsin B (green) in Raw264.7 using Cathepsin B antibody, and DAPI (blue)