

Product Name: beta Catenin Rabbit Monoclonal Antibody
Catalog #: AMRe03762

Summary

Production Name	beta Catenin Rabbit Monoclonal Antibody
Description	Rabbit Monoclonal antibody
Host	Rabbit
Application	WB, ICC/IF
Reactivity	Human, Mouse, Rat

Performance

Conjugation	Unconjugated
Modification	Unmodified
Isotype	IgG
Clonality	Monoclonal
Form	Liquid
Storage	Store at 4°C short term. Aliquot and store at -20°C long term. Avoid freeze/thaw cycles.
Buffer	50mM Tris-Glycine(pH 7.4), 0.15M NaCl, 40% Glycerol, 0.01% Sodium azide and 0.05% protective protein
Purification	Affinity Purification

Immunogen

Gene Name	CTNNB1
Alternative Names	CTNNB1; CTNNB; OK/SW-cl.35; Catenin beta-1; Beta-catenin
Gene ID	1499
SwissProt ID	P35222.

Application

Dilution Ratio	WB: 1:500-1:1000 IF: 1:50-1:200
Molecular Weight	Calculated MW: 85 kDa; Observed MW: 85 kDa

Product Name: beta Catenin Rabbit Monoclonal Antibody
Catalog #: AMRe03762

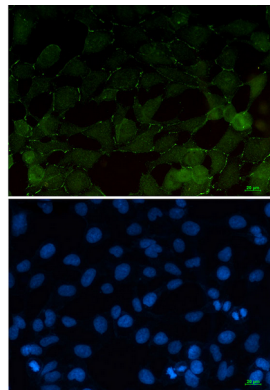
Background

Beta-catenin is an adherens junction protein. Adherens junctions (AJs; also called the zonula adherens) are critical for the establishment and maintenance of epithelial layers, such as those lining organ surfaces. AJs mediate adhesion between cells, communicate a signal that neighboring cells are present, and anchor the actin cytoskeleton. In serving these roles, AJs regulate normal cell growth and behavior.

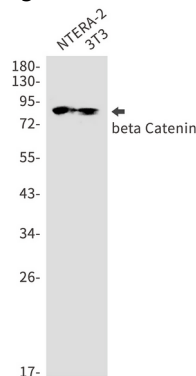
Research Area

Signal Transduction

Image Data

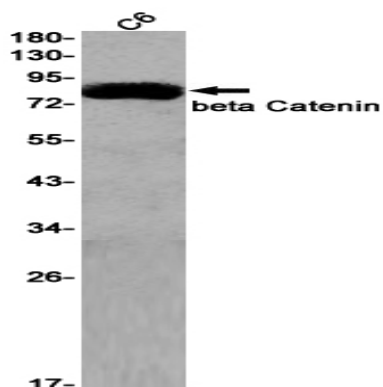


Immunocytochemistry analysis of beta Catenin (green) in 293T using beta Catenin antibody, and DAPI(blue).



Western blot analysis of beta Catenin in NTERA-2, 3T3 lysates using beta Catenin antibody.

Product Name: beta Catenin Rabbit Monoclonal Antibody
Catalog #: AMRe03762



Western blot analysis of beta Catenin in C6 lysates using beta Catenin antibody

Note

For research use only.