
Product Name: Alkaline Phosphatase Rabbit Monoclonal antibody**Catalog #: AMRe03760**

For research use only.

Summary

Description	Recombinant rabbit monoclonal antibody
Host	Rabbit
Application	WB,IHC,ICC/IF,IP
Reactivity	Human,Rat
Conjugation	Unconjugated
Modification	Unmodified
Isotype	IgG
Clonality	Monoclonal Antibody
Form	Liquid
Concentration	0.16mg/ml. The concentration of this product may be batch-dependent.
Storage	Aliquot and store at -20°C (valid for 12 months). Avoid freeze/thaw cycles.
Shipping	Ice bags
Buffer	50mM Tris-Glycine(pH 7.4), 0.15M NaCl, 40% Glycerol, 0.01% Sodium azide and 0.05% protective protein
Purification	Affinity Purified

Application

Dilution Ratio	WB 1:500-1:1000,IHC 1:50-1:100,ICC/IF 1:50-1:200,IP 1:20-1:50
Molecular Weight	Calculated MW: 57 kDa; Observed MW: 75 kDa

Antigen Information

Gene Name	ALPL
Alternative Names	ALPL; Alkaline phosphatase; tissue-nonspecific isozyme; AP-TNAP; TNSALP; Alkaline phosphatase liver/bone/kidney isozyme
Gene ID	249
SwissProt ID	P05186
Immunogen	A synthetic peptide of human Alkaline Phosphatase, Tissue Non-Specific

Background

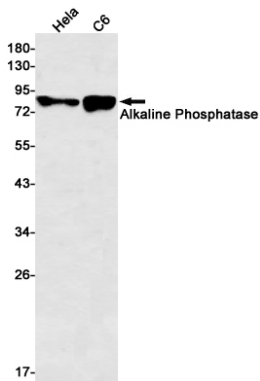
There are at least four distinct but related alkaline phosphatases: intestinal, placental, placental-like, and liver/bone/kidney

(tissue non-specific). The first three are located together on chromosome 2, while the tissue non-specific form is located on chromosome 1. The product of this gene is a membrane bound glycosylated enzyme that is not expressed in any particular tissue and is, therefore, referred to as the tissue-nonspecific form of the enzyme.

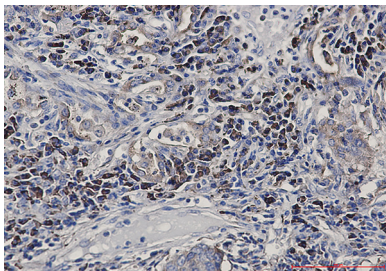
Research Area

Cell Biology

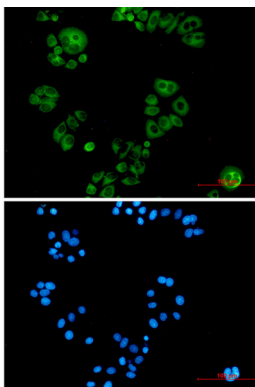
Image Data



Western blot analysis of Alkaline Phosphatase in HeLa, C6 lysates using Alkaline Phosphatase antibody.



Immunohistochemistry analysis of paraffin-embedded Human lung cancer using Alkaline Phosphatase, NonSpecific antibody. High-pressure and temperature Sodium Citrate pH 6.0 was used for antigen retrieval.



Immunocytochemistry analysis of Alkaline Phosphatase, NonSpecific (green) in HeLa using Alkaline Phosphatase, NonSpecific antibody, and DAPI (blue)