

---

**Product Name: mtTFA Rabbit Monoclonal antibody****Catalog #: AMRe03740**

For research use only.

**Summary**

<b>Description</b>	Recombinant rabbit monoclonal antibody
<b>Host</b>	Rabbit
<b>Application</b>	WB,IHC,ICC/IF,IP
<b>Reactivity</b>	Human
<b>Conjugation</b>	Unconjugated
<b>Modification</b>	Unmodified
<b>Isotype</b>	IgG
<b>Clonality</b>	Monoclonal Antibody
<b>Form</b>	Liquid
<b>Concentration</b>	0.11mg/ml. The concentration of this product may be batch-dependent.
<b>Storage</b>	Aliquot and store at -20°C (valid for 12 months). Avoid freeze/thaw cycles.
<b>Shipping</b>	Ice bags
<b>Buffer</b>	50mM Tris-Glycine(pH 7.4), 0.15M NaCl, 40% Glycerol, 0.01% Sodium azide and 0.05% protective protein
<b>Purification</b>	Affinity Purified

**Application**

<b>Dilution Ratio</b>	WB 1:500-1:1000,IHC 1:50-1:100,ICC/IF 1:50-1:200,IP 1:20-1:50
<b>Molecular Weight</b>	Calculated MW: 29 kDa; Observed MW: 24 kDa

**Antigen Information**

<b>Gene Name</b>	TFAM
<b>Alternative Names</b>	MtTF1; mtTFA; TCF6; TCF6L1; TCF6L2; TCF6L3; TFAM; Transcription factor 6
<b>Gene ID</b>	7019
<b>SwissProt ID</b>	Q00059
<b>Immunogen</b>	A synthetic peptide of human mtTFA

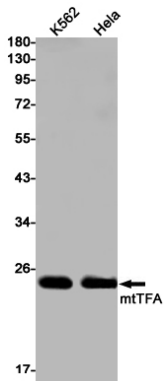
**Background**

Binds to the mitochondrial light strand promoter and functions in mitochondrial transcription regulation. Required for accurate and efficient promoter recognition by the mitochondrial RNA polymerase.

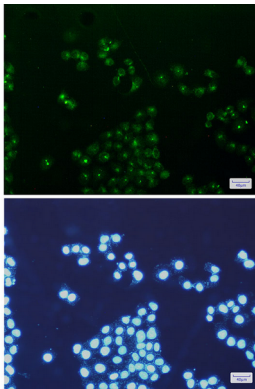
## Research Area

Tags & Cell Markers

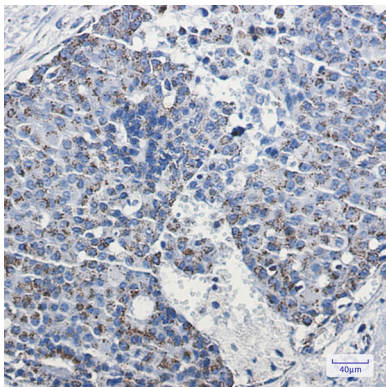
## Image Data



Western blot analysis of mtTFA in K562, HeLa lysates using mtTFA antibody.



Immunocytochemistry analysis of mtTFA/TFAM (green) in HeLa using mtTFA/TFAM antibody, and DAPI (blue)



Immunohistochemistry analysis of paraffin-embedded Human breast cancer using mtTFA antibody. High-pressure and temperature Sodium Citrate pH 6.0 was used for antigen retrieval.