

**Product Name: IKB alpha Rabbit Monoclonal antibody****Catalog #: AMRe03739**

For research use only.

**Summary**

<b>Description</b>	Recombinant rabbit monoclonal antibody
<b>Host</b>	Rabbit
<b>Application</b>	WB
<b>Reactivity</b>	Human,Rat
<b>Conjugation</b>	Unconjugated
<b>Modification</b>	Unmodified
<b>Isotype</b>	IgG
<b>Clonality</b>	Monoclonal Antibody
<b>Form</b>	Liquid
<b>Concentration</b>	0.5mg/ml. The concentration of this product may be batch-dependent.
<b>Storage</b>	Aliquot and store at -20°C (valid for 12 months). Avoid freeze/thaw cycles.
<b>Shipping</b>	Ice bags
<b>Buffer</b>	50mM Tris-Glycine(pH 7.4), 0.15M NaCl, 40% Glycerol, 0.01% Sodium azide and 0.05% protective protein
<b>Purification</b>	Affinity Purified

**Application**

<b>Dilution Ratio</b>	WB 1:500-1:1000
<b>Molecular Weight</b>	Calculated MW: 36 kDa; Observed MW: 39 kDa

**Antigen Information**

<b>Gene Name</b>	NFKBIA
<b>Alternative Names</b>	NFKBIA; IKBA; MAD3; NFKBI; NF-kappa-B inhibitor alpha; I-kappa-B-alpha; Ikb-alpha; IkappaBalph; Major histocompatibility complex enhancer-binding protein MAD3
<b>Gene ID</b>	4792
<b>SwissProt ID</b>	P25963
<b>Immunogen</b>	A synthetic peptide of human IKB alpha

**Background**

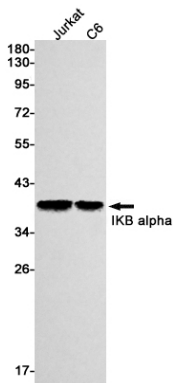
NFKB1 (MIM 164011) or NFKB2 (MIM 164012) is bound to REL (MIM 164910), RELA (MIM 164014), or RELB (MIM 604758) to

form the NF $\kappa$ B complex. The NF $\kappa$ B complex is inhibited by I-kappa-B proteins (NF $\kappa$ BIA or NF $\kappa$ BIB, MIM 604495), which inactivate NF-kappa-B by trapping it in the cytoplasm.

## Research Area

Epigenetics and Nuclear Signaling

## Image Data



Western blot analysis of IKB alpha in Jurkat, C6 lysates using IKB alpha antibody.