

---

**Product Name: Bcl2 Rabbit Monoclonal antibody****Catalog #: AMRe03737**

For research use only.

**Summary**

<b>Description</b>	Recombinant rabbit monoclonal antibody
<b>Host</b>	Rabbit
<b>Application</b>	WB,IHC,IP
<b>Reactivity</b>	Human
<b>Conjugation</b>	Unconjugated
<b>Modification</b>	Unmodified
<b>Isotype</b>	IgG
<b>Clonality</b>	Monoclonal Antibody
<b>Form</b>	Liquid
<b>Concentration</b>	0.15mg/ml. The concentration of this product may be batch-dependent.
<b>Storage</b>	Aliquot and store at -20°C (valid for 12 months). Avoid freeze/thaw cycles.
<b>Shipping</b>	Ice bags
<b>Buffer</b>	50mM Tris-Glycine(pH 7.4), 0.15M NaCl, 40% Glycerol, 0.01% Sodium azide and 0.05% protective protein
<b>Purification</b>	Affinity Purified

**Application**

<b>Dilution Ratio</b>	WB 1:500-1:1000,IHC 1:50-1:100,IP 1:20-1:50
<b>Molecular Weight</b>	Calculated MW: 26 kDa; Observed MW: 26 kDa

**Antigen Information**

<b>Gene Name</b>	BCL2
<b>Alternative Names</b>	BCL2; Apoptosis regulator Bcl-2
<b>Gene ID</b>	596
<b>SwissProt ID</b>	P10415
<b>Immunogen</b>	A synthetic peptide of human Bcl-2

**Background**

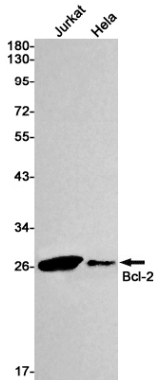
This gene encodes an integral outer mitochondrial membrane protein that blocks the apoptotic death of some cells such as lymphocytes. Constitutive expression of BCL2, such as in the case of translocation of BCL2 to Ig heavy chain locus, is thought to

be the cause of follicular lymphoma.

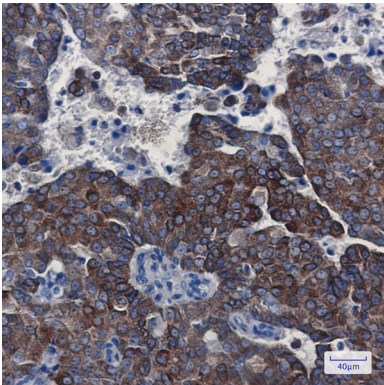
## Research Area

Cell Biology

## Image Data



Western blot analysis of Bcl2 in Jurkat, HeLa lysates using Bcl2 antibody.



Immunohistochemistry analysis of paraffin-embedded Human breast cancer using Bcl2 antibody. High-pressure and temperature Sodium Citrate pH 6.0 was used for antigen retrieval.