
Product Name: Klotho Rabbit Monoclonal Antibody**Catalog #: AMRe03301**

For research use only.

Summary

Description	Recombinant rabbit monoclonal antibody
Host	Rabbit
Application	WB,IHC
Reactivity	Human,Mouse
Conjugation	Unconjugated
Modification	Unmodified
Isotype	IgG
Clonality	Monoclonal
Form	Liquid
Concentration	0.64mg/ml. The concentration of this product may be batch-dependent.
Storage	Aliquot and store at -20°C (valid for 12 months). Avoid freeze/thaw cycles.
Shipping	Ice bags
Buffer	Rabbit IgG in phosphate buffered saline , pH 7.4, 150mM NaCl, 0.02% sodium azide and 50% glycerol.
Purification	Affinity Chromatography

Application

Dilution Ratio	WB 1:500-1:1000,IHC 1:50-1:100
Molecular Weight	Calculated MW: 116 kDa; Observed MW: 62 kDa

Antigen Information

Gene Name	KL
Alternative Names	KI; Klotho peptide
Gene ID	9365
SwissProt ID	Q9UEF7
Immunogen	A synthetic peptide of human Klotho

Background

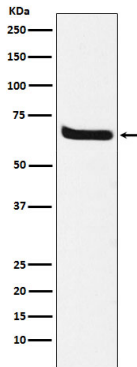
May have weak glycosidase activity towards glucuronylated steroids. However, it lacks essential active site Glu residues at positions 239 and 872, suggesting it may be inactive as a glycosidase in vivo. May be involved in the regulation of calcium and

phosphorus homeostasis by inhibiting the synthesis of active vitamin D (By similarity).

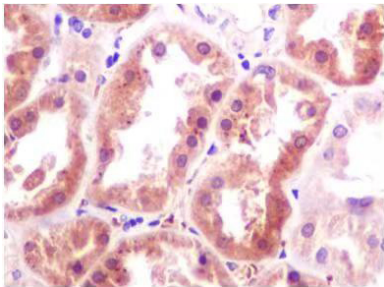
Research Area

Signal Transduction

Image Data



Western blot analysis of Klotho in Human fetal kidney lysates using Klotho antibody.



Immunohistochemistry analysis of paraffin-embedded Human fetal kidney using Klotho antibody. High-pressure and temperature Sodium Citrate pH 6.0 was used for antigen retrieval.